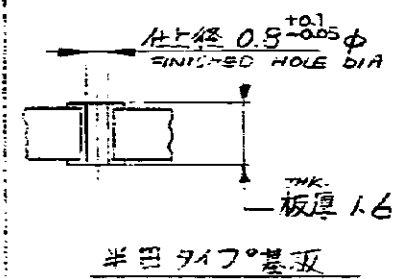
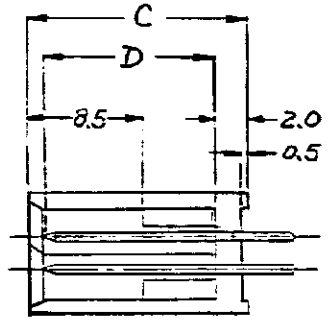
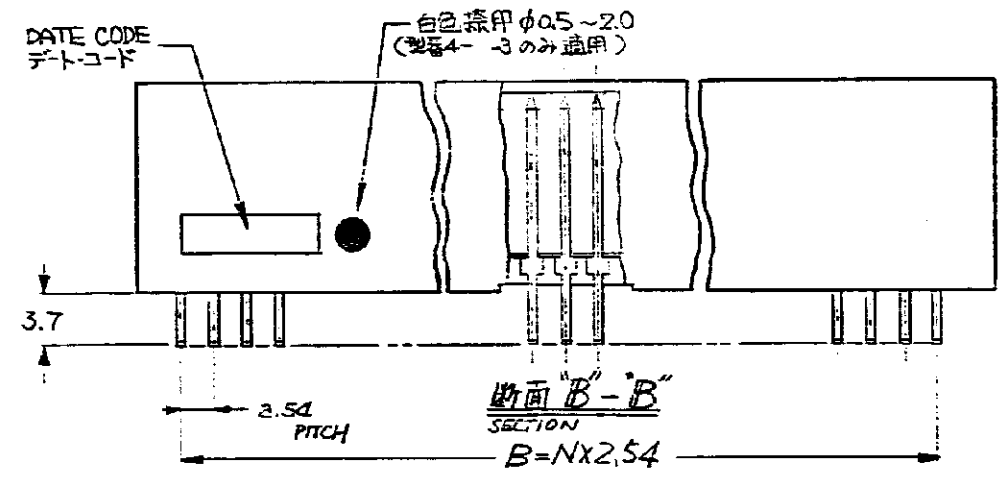
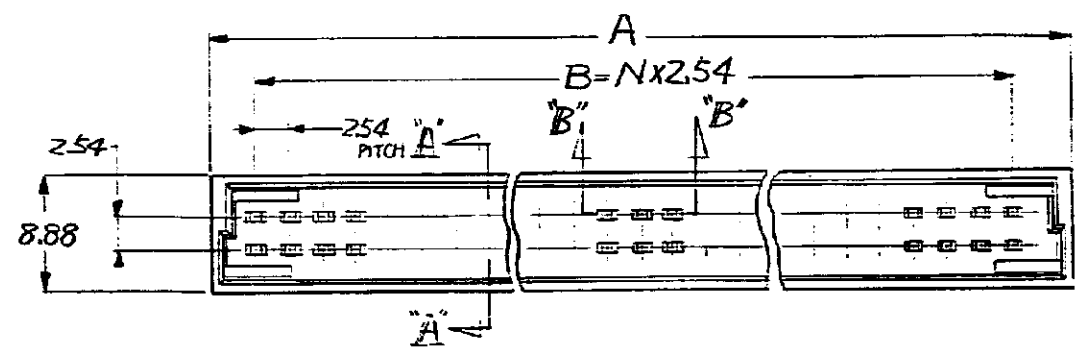


© 1985 AMP (Japan) Ltd. ALL RIGHTS RESERVED. AMP PRODUCTS COVERED BY PATENTS AND OR PATENTS PENDING.



REV	REVISION RECORD	DR	CHK	DATE
E1	REVISED PER ECO-10-000444	KK	AEG	JAN10
E	REVISED (FJDO-0207-03)	K.R	S.M	19MAR '04
D	追加 J0921	J.S	K.S	7/21/87
C	追加 3592	K.S	K.S	11/26/86
B	変更 35-2272	K.S	K.S	11/21/85
A	REDRAWN WITH CHANGE	K.S	K.S	11/15/85

NOTE

- HSG MATERIAL; PBT (GLASS) UL94V-0, 3LK
- CONT MATERIAL; CA725 (Cu-Ni-Sn ALLOY)
- FINISH; CONTACT AREA: 1.3μ MIN. NICKEL UNDER PLATING, 0.2μ MIN GOLD PLATING. POST: 1.3μ MIN. NICKEL UNDER PLATING, 2μ MIN TIN PLATING
- ALL DIMENSIONS SHOWN ARE FOR REFERENCE ONLY
- PRODUCT SPEC: 108-5197

注記

- ハウジング材料; ガラス入 PBT, UL94-V-0, 黒
- コンタクト材料; CA725 (Cu-Ni-Sn合金)
- メッキ仕様;
 - コネクタ嵌合部: 1.3μ最小の下地Niの上
 - トの2μ最小の金メッキ
 - ポスト部: 1.3μ最小の下地Niの上に
 - 錫メッキ (2μ最小)
- 全ての寸法は参考寸法である。
- 製品規格 108-5197
- 3, -0, 4, -3の コネクタ嵌合部のめっき仕様; 1.3μ最小の下地Niの上に0.5μ最小の金メッキ, その他は3の仕様と同じ

REV	REVISED	DR	CHK	DATE	REV	REVISED	DR	CHK	DATE
△	OBSOLETE	7.8	10.5	48.26	55.9	19	40	4	3
△	OBSOLETE			40.64	48.3	16	34	4	2
△	OBSOLETE			30.48	38.1	12	26	4	1
△	OBSOLETE			73.66	81.3	29	60	4	0
△	OBSOLETE			60.96	68.6	24	50	3	9
△	OBSOLETE	11.4	16.1	48.26	55.9	19	40	3	8
△	OBSOLETE			35.56	43.2	14	30	3	7
△	OBSOLETE			40.64	48.3	16	34	3	6
△	OBSOLETE			30.48	38.1	12	26	3	5
△	OBSOLETE			73.66	81.3	29	60	3	4
△	OBSOLETE			60.96	68.6	24	50	3	3
△	OBSOLETE			48.26	55.9	19	40	3	2
△	OBSOLETE			35.56	43.2	14	30	3	1
△	OBSOLETE	5.8	10.5	48.26	55.9	19	40	3	0
△	OBSOLETE			40.64	48.3	16	34	2	9
△	OBSOLETE			30.48	38.1	12	26	2	8
△	OBSOLETE			73.66	81.3	29	60	2	7
△	OBSOLETE			60.96	68.6	24	50	2	6
△	OBSOLETE			48.26	55.9	19	40	2	5
△	OBSOLETE	13.4	16.1	35.56	43.2	14	30	2	4
△	OBSOLETE			40.64	48.3	16	34	2	3
△	OBSOLETE			30.48	38.1	12	26	2	2
△	OBSOLETE			73.66	81.3	29	60	2	1
△	OBSOLETE			60.96	68.6	24	50	1	0
△	OBSOLETE			48.26	55.9	19	40	1	9
△	OBSOLETE	7.8	10.5	35.56	43.2	14	30	1	8

MATERIAL	TOLERANCE = 0.25 EXCEPT AS NOTED	tyco Electronics	Tyco Electronics AMP K.K. Kawasaki, Japan
FINISH	DR: 1-30-85 CK: K. Sawada	NAME: POST HEADER, STACKING CONN	
	DE: 11-30-85	SIZE: A3 LOC: J	
	APP: 1-30-85	SCALE: REV: E1 SHEET: 1/21	