

## DETAILS

<b>Product Number</b>	C13484_ANNA-40-7-M
<b>Family</b>	Anna
<b>Type</b>	Lens array
<b>Color</b>	clear
<b>Diameter</b>	40 mm
<b>Height</b>	10,7 mm
<b>Style</b>	round
<b>Optic Material</b>	PMMA
<b>Holder Material</b>	
<b>Fastening</b>	
<b>Status</b>	production ready
<b>ROHS Compliant</b>	Yes
<b>Date Updated</b>	16/12/2016



## OPTICAL PROPERTIES

LED	Viewing	Light	Effi-		Connector
	Angle	Beam	ciency	cd/lm	
SM4	sim: 31	Medium	sim: 84 %	sim: 1.935	-
XP-G	sim: 26	Medium	sim: 91 %	sim: 4.498	-
XT-E	23 deg	Medium	85 %	3.500	-
XP-E	sim: 22	Medium	sim: 92 %	sim: 6.343	-
XB-D	sim: 22	Medium	sim: 89 %	sim: 5.911	-
XP-G2	26 deg	Medium	87 %	3.500	-
XP-E2	23 deg	Medium	87 %	4.700	-
XP-L	sim: 27	Medium	sim: 89 %	sim: 3.200	-
C3535 (Intematix)	sim: 15	Medium	sim: 93 %	sim: 4.956	-
H35C0 (LEMWA33)	sim: 26	Medium	sim: 91 %	sim: 3.800	-
LUXEON PWT	sim: 13	Medium	sim: 88 %	sim: 14.410	-
LUXEON T	sim: 22	Medium	sim: 92 %	sim: 5.643	-
LUXEON TX	sim: 23	Medium	sim: 92 %	sim: 5.000	-
NF2x757A	sim: 17	Medium	sim: 91 %	sim: 8.399	-
NCSxx19A	sim: 17	Medium	sim: 87 %	sim: 7.748	-
NVSxx19B/NVSxx19C	sim: 23	Medium	sim: 92 %	sim: 4.560	-
Oslon Square EC	sim: 20	Medium	sim: 91 %	sim: 6.691	-
SFH 4715S	sim: 15	Medium	sim: 89 %	sim: 11.480	-
Ostar Lighting+	sim: 16	Medium	sim: 88 %	sim: 3.119	-
Z8Y22P	sim: 22	Medium	sim: 90 %	sim: 4.400	-
Double Dome (GM2BB)	sim: 20	Medium	sim: 88 %	sim: 5.783	-

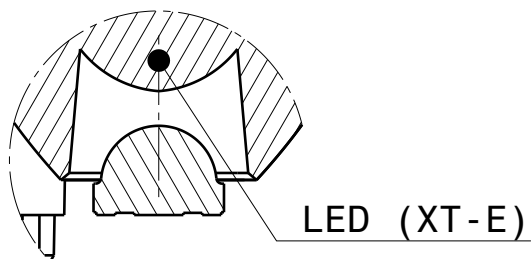
D

C

B

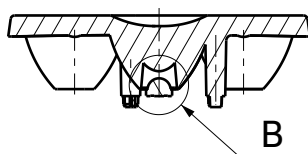
A

4

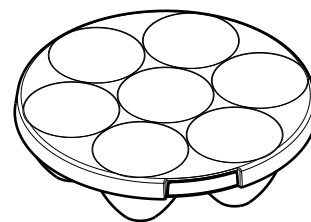


Detail B  
Scale: 5:1

3

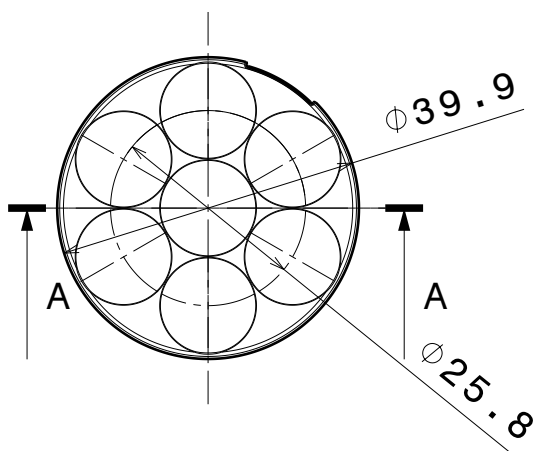
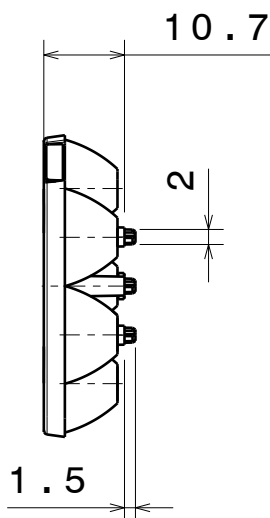


Section view A-A  
Scale: 1:1



Isometric view  
Scale: 1:1

2



4

3

2

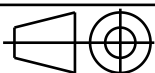
INDEX	PART NO	DESCRIPTION	MATERIAL	COLOUR
1	ANNA-40-7-series		PMMA	

Tolerances if not otherwise shown  
According to DIN ISO 2768-1  
Linear measures:  
Up to 30mm class M, otherwise class C.  
According to DIN ISO 2768-2  
Form and position: class L

LEDiL

Ledil Oy  
Salorankatu 10  
FIN 24240 SALO  
Finland

THIRD ANGLE PROJECTION:



DRAWING TITLE

ANNA-40-7-series

This drawing is the property  
of LEDiL Oy. It may not be  
reproduced, copied or  
communicated without a written  
agreement with LEDiL Oy."

SIZE PART NUMBER

A4

-

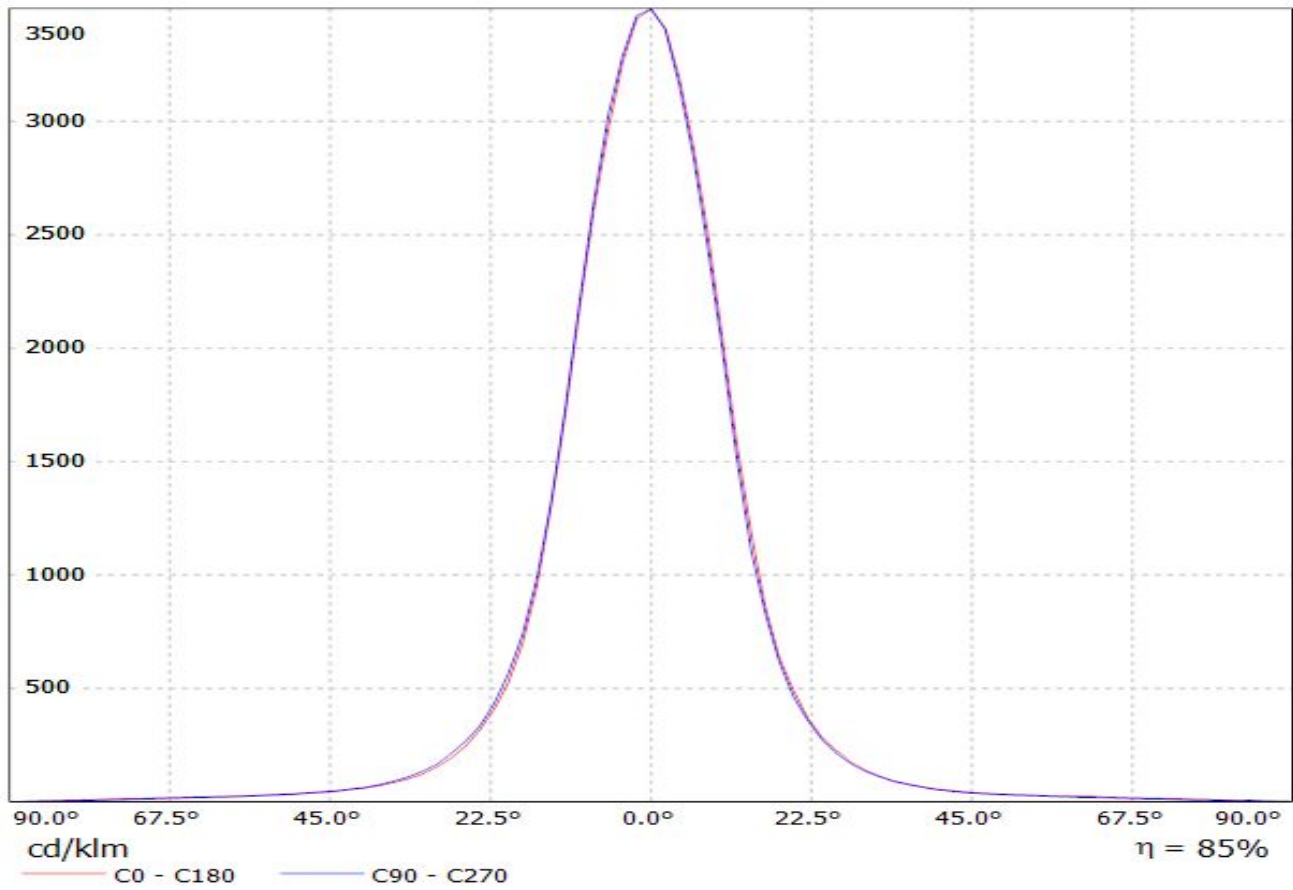
SCALE	1:1	WEIGHT	7,60 g	SHEET	1/1
-------	-----	--------	--------	-------	-----

D

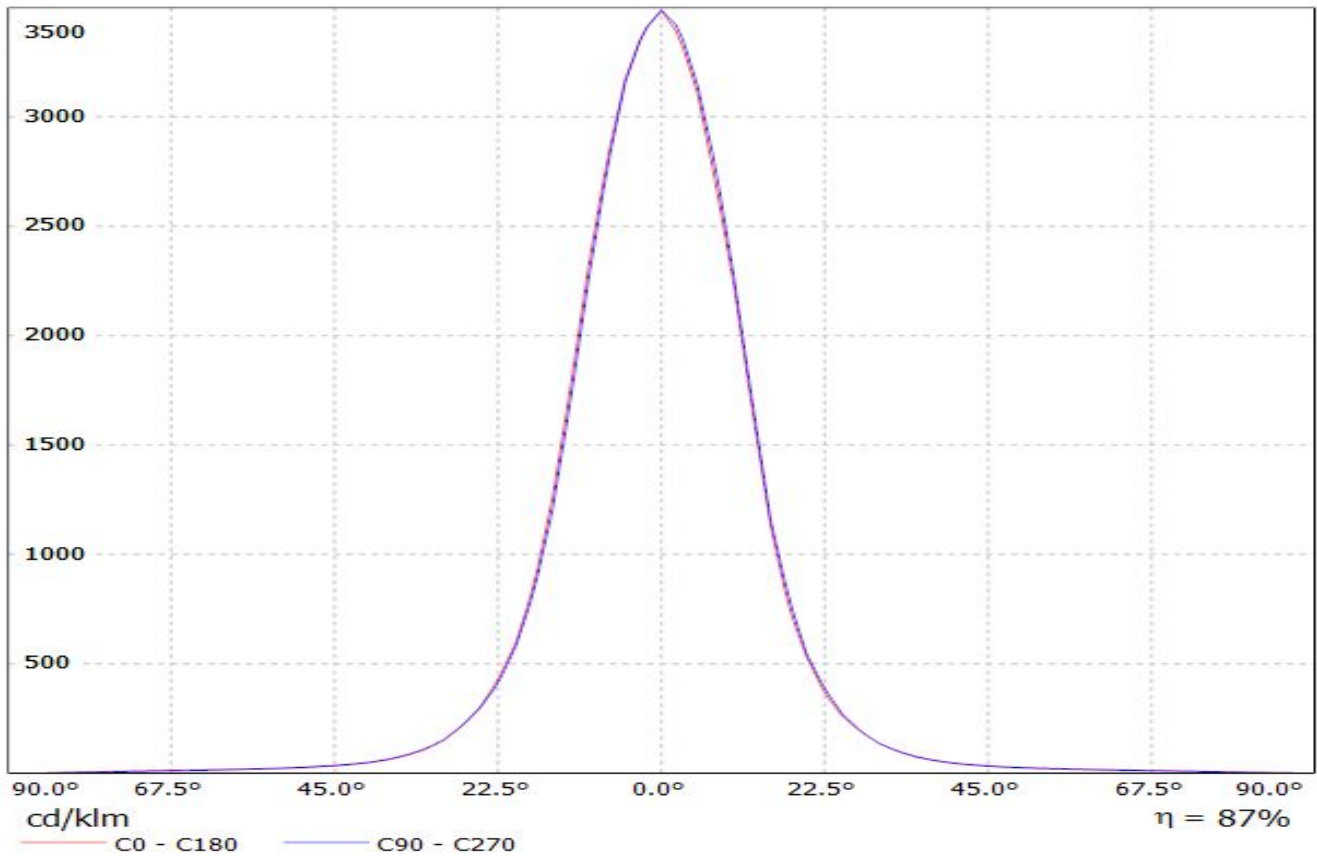
A

1

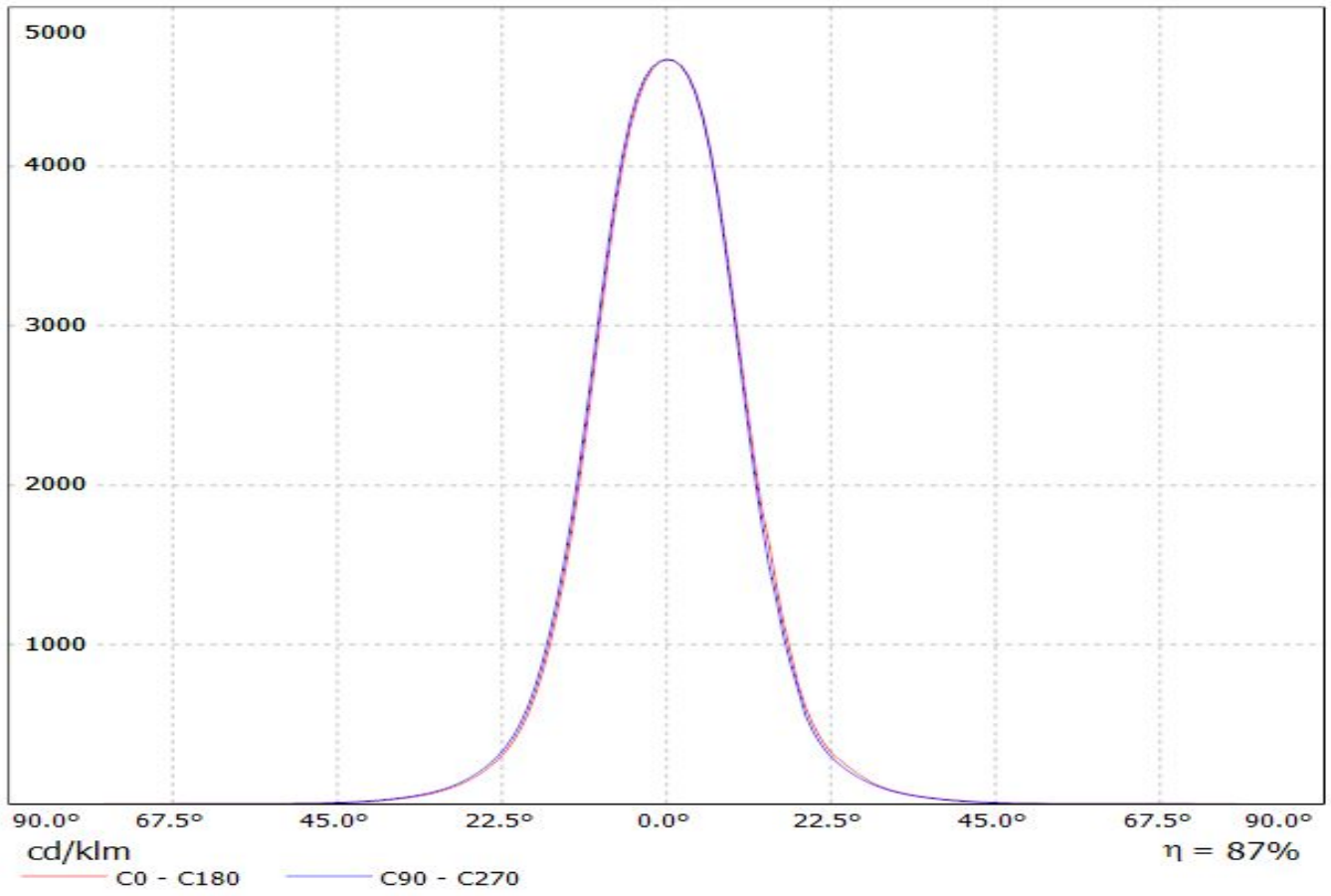
Luminaire: LEDiL C13484\_ANNA-40-7-M\_(XT-E)  
Lamps: 1 x CREE XT-E 720lm@250mA



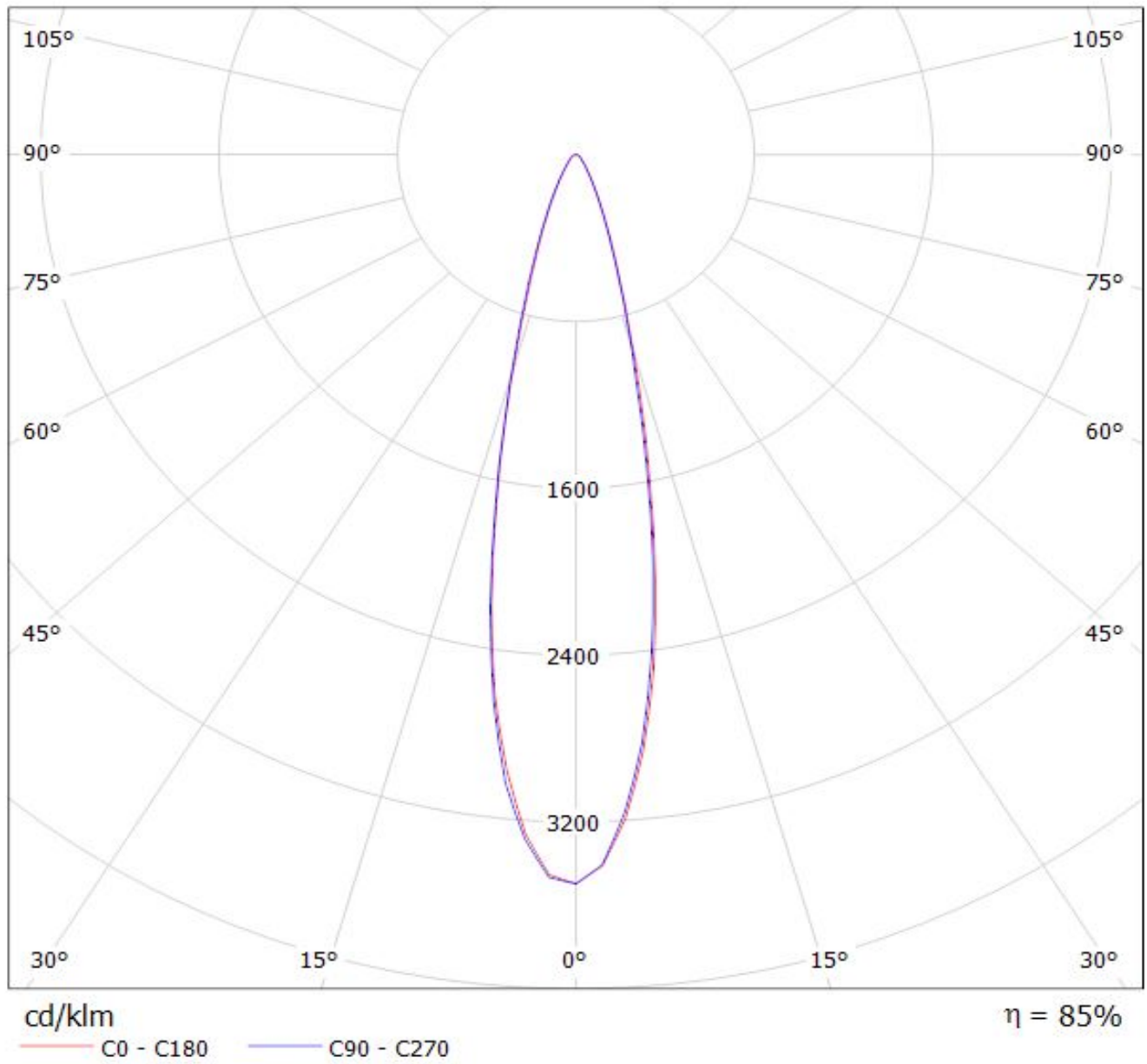
Luminaire: LEDiL C13484\_ANNA-40-7-M\_(XP-G2)  
Lamps: 1 x CREE XP-G2 697lm@250mA



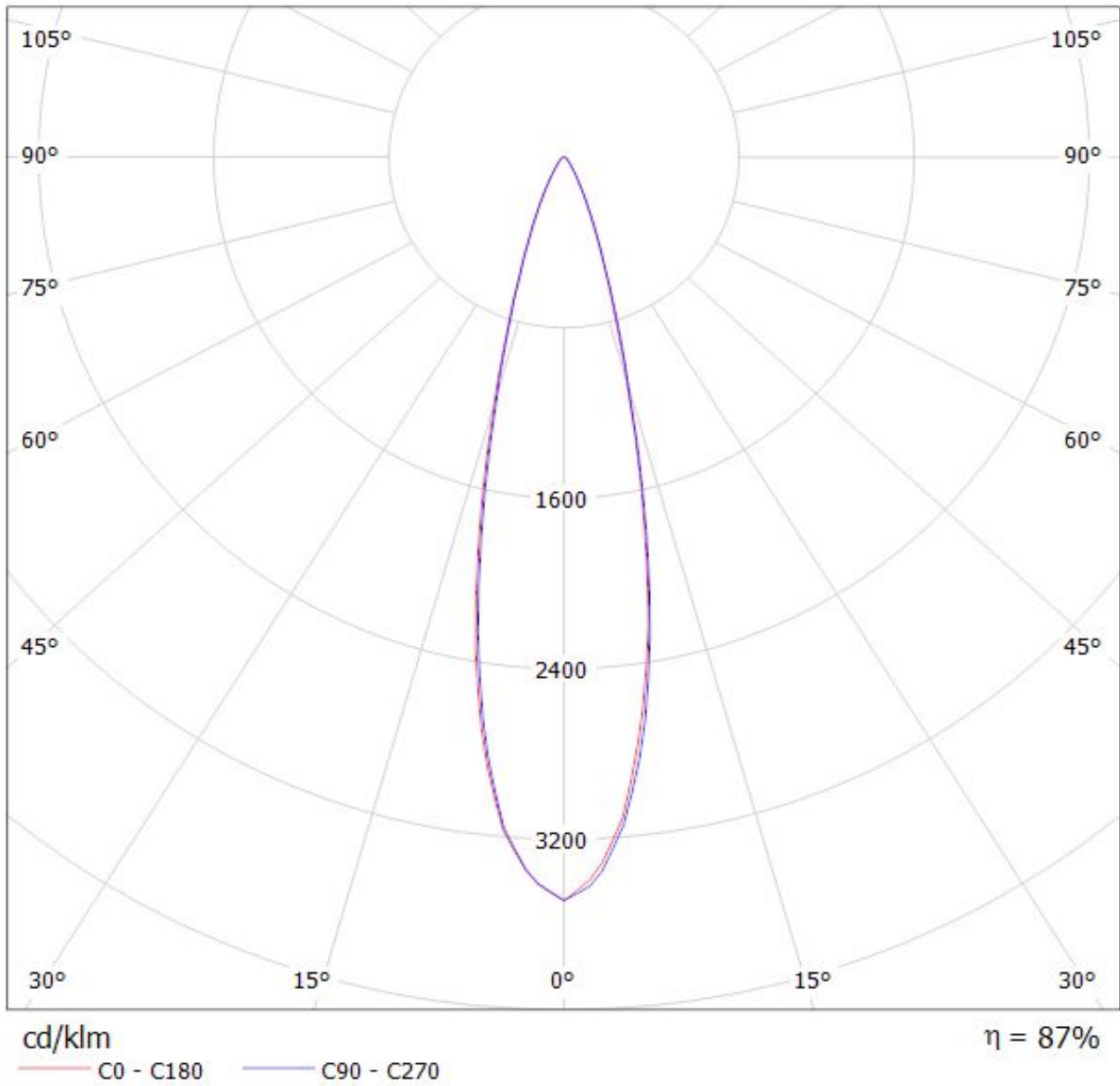
Luminaire: Ledil Oy  
Lamps: 1 x



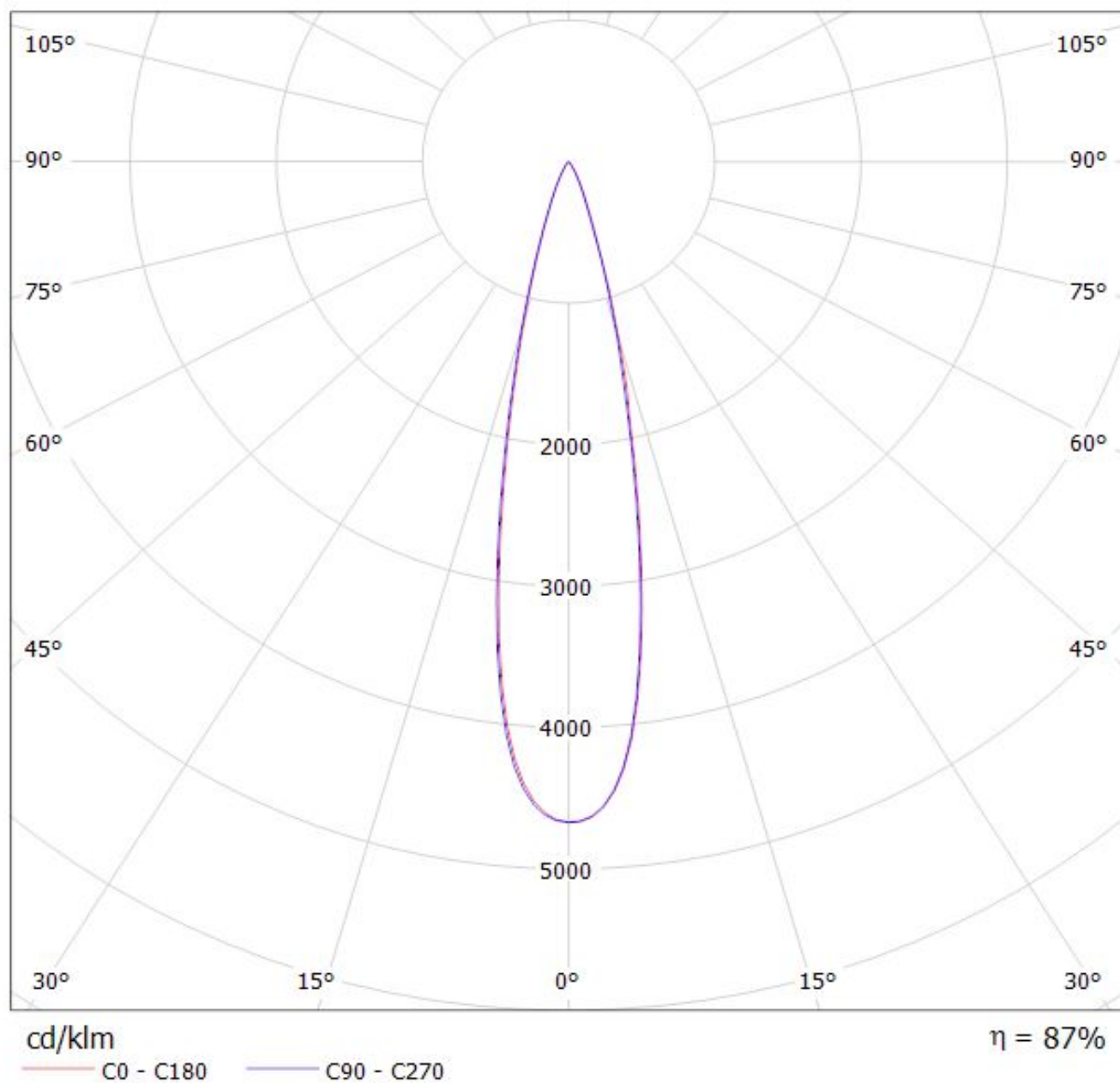
Luminaire: LEDiL C13484\_ANNA-40-7-M\_(XT-E)  
Lamps: 1 x CREE XT-E 720lm@250mA



Luminaire: LEDiL C13484\_ANNA-40-7-M\_(XP-G2)  
Lamps: 1 x CREE XP-G2 697lm@250mA



Luminaire: Ledil Oy  
Lamps: 1 x





**NOTE: The typical divergence will be changed by different color, chip size and chip position tolerance. The typical total divergence is the full angle measured where the luminous intensity is half of the peak value.**