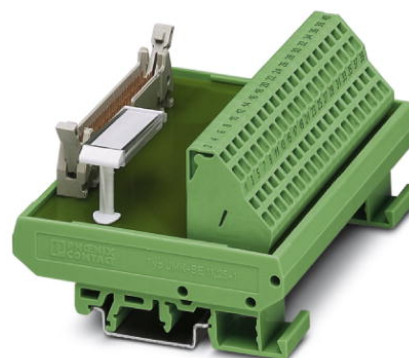



FLKM 40/ZFKDS

Order No.: 2302942



<http://eshop.phoenixcontact.de/phoenix/treeViewClick.do?UID=2302942>

Standard 1:1 FLK module, with spring-cage connection and flat-ribbon cable plug connector, no. of positions 40

Commercial data	
GTIN (EAN)	 4 017918 941451
Note	Made-to-order
sales group	I001
Pack	1 pcs.
Customs tariff	85369010
Catalog page information	Page 280 (IF-2009)

Product notes

WEEE/RoHS-compliant since:
05/08/2006



<http://www.download.phoenixcontact.com>
Please note that the data given here has been taken from the online catalog. For comprehensive information and data, please refer to the user documentation. The General Terms and Conditions of Use apply to Internet downloads.

Technical data

General data	
Nominal voltage U_N	< 50 V AC
	60 V DC
Max. current carrying capacity per branch	1 A
Number of positions	40
Width	113 mm

Height	77 mm
Depth	51 mm
Status display	No
Ambient temperature (operation)	-20 °C ... 50 °C
Ambient temperature (storage/transport)	-20 °C ... 70 °C
Mounting position	Any
Standards/regulations	IEC 60664
	DIN EN 50178
	IEC 62103

Connection data

Connection 1	PCB connection
Type of connection	Spring-cage connection
Conductor cross section solid min.	0.2 mm ²
Conductor cross section solid max.	4 mm ²
Conductor cross section stranded min.	0.2 mm ²
Conductor cross section stranded max.	2.5 mm ²
Conductor cross section AWG/kcmil min.	24
Conductor cross section AWG/kcmil max	12
Connection 2	Flat-ribbon cable connection
Number of connections	1
Type of connection	Flat-ribbon cable plug connector in acc. with IEC 60603-13
Number of positions	40

Accessories

Item	Designation	Description
------	-------------	-------------

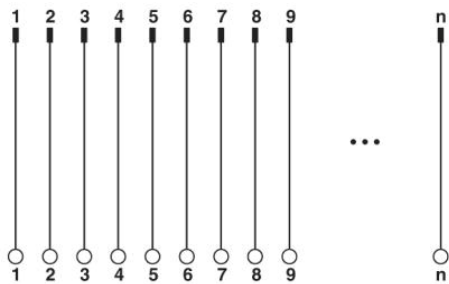
Cable/conductor

2288985	FLK 40/EZ-DR/ 50/KONFEK	Round cable sets, with two 40-pos. socket strips (1:1 connection), also for use with Siemens SIMATIC® S5-95U and 100U (32 x digital IN/OUT), cable length: 0.5 m
2288998	FLK 40/EZ-DR/ 100/KONFEK	Round cable sets, with two 40-pos. socket strips (1:1 connection), also for use with Siemens SIMATIC® S5-95U and 100U (32 x digital IN/OUT), cable length: 1 m
2289007	FLK 40/EZ-DR/ 150/KONFEK	Round cable sets, with two 40-pos. socket strips (1:1 connection), also for use with Siemens SIMATIC® S5-95U and 100U (32 x digital IN/OUT), cable length: 1.5 m

2289010	FLK 40/EZ-DR/ 200/KONFEK	Round cable sets, with two 40-pos. socket strips (1:1 connection), also for use with Siemens SIMATIC® S5-95U and 100U (32 x digital IN/OUT), cable length: 2 m
2289023	FLK 40/EZ-DR/ 250/KONFEK	Round cable sets, with two 40-pos. socket strips (1:1 connection), also for use with Siemens SIMATIC® S5-95U and 100U (32 x digital IN/OUT), cable length: 2.5 m
2289036	FLK 40/EZ-DR/ 300/KONFEK	Round cable sets, with two 40-pos. socket strips (1:1 connection), also for use with Siemens SIMATIC® S5-95U and 100U (32 x digital IN/OUT), cable length: 3 m
2289049	FLK 40/EZ-DR/ 350/KONFEK	Round cable sets, with two 40-pos. socket strips (1:1 connection), also for use with Siemens SIMATIC® S5-95U and 100U (32 x digital IN/OUT), cable length: 3.5 m
2289052	FLK 40/EZ-DR/ 400/KONFEK	Round cable sets, with two 40-pos. socket strips (1:1 connection), also for use with Siemens SIMATIC® S5-95U and 100U (32 x digital IN/OUT), cable length: 4 m
2299589	FLK 40/EZ-DR/ 600/KONFEK	Round cable sets, with two 40-pos. socket strips (1:1 connection), also for use with Siemens SIMATIC® S5-95U and 100U (32 x digital IN/OUT), cable length: 6 m
2299592	FLK 40/EZ-DR/ 800/KONFEK	Round cable sets, with two 40-pos. socket strips (1:1 connection), also for use with Siemens SIMATIC® S5-95U and 100U (32 x digital IN/OUT), cable length: 8 m
2299602	FLK 40/EZ-DR/1000/KONFEK	Round cable sets, with two 40-pos. socket strips (1:1 connection), also for use with Siemens SIMATIC® S5-95U and 100U (32 x digital IN/OUT), cable length: 10 m
2295059	FLK EZ-DR.../.../...	Round cable, with preassembly, not shielded, variable cable length

Diagrams/Drawings

Circuit diagram



Address

PHOENIX CONTACT Deutschland GmbH
Flachmarktstr. 8
32825 Blomberg, Germany
Phone +49 5235 3 12000
Fax +49 5235 3 41200
<http://www.phoenixcontact.de>



© 2011 Phoenix Contact
Technical modifications reserved;