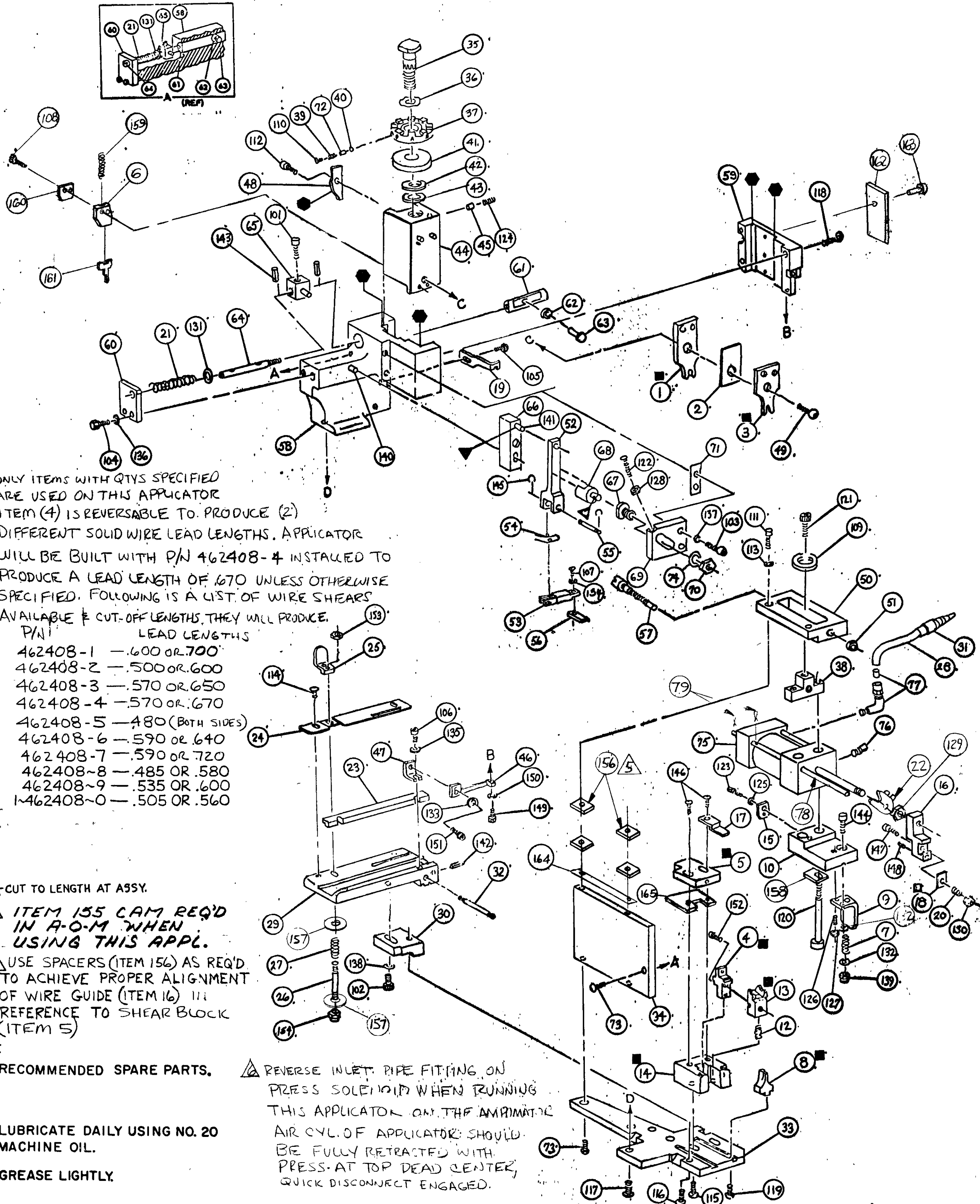


THIS DRAWING IS A CONTROL DRAWING. IT IS TO BE USED TO CONTROL THE MANUFACTURE OF THE APPLICATOR. IT IS NOT TO BE USED AS A CONSTRUCTION DRAWING. THE CONTROLLING ENGINEERING ORGANIZATION SHOULD BE CONTACTED FOR THE LATEST REVISION.



1. ONLY ITEMS WITH QTY'S SPECIFIED ARE USED ON THIS APPLICATOR  
 ITEM (4) IS REVERSABLE TO PRODUCE (2) DIFFERENT SOLID WIRE LEAD LENGTHS. APPLICATOR WILL BE BUILT WITH P/N 462408-4 INSTALLED TO PRODUCE A LEAD LENGTH OF .670 UNLESS OTHERWISE SPECIFIED. FOLLOWING IS A LIST OF WIRE SHEARS AVAILABLE & CUT-OFF LENGTHS THEY WILL PRODUCE.

P/N	LEAD LENGTHS
462408-1	.600 OR .700
462408-2	.500 OR .600
462408-3	.570 OR .650
462408-4	.570 OR .670
462408-5	.480 (BOTH SIDES)
462408-6	.590 OR .640
462408-7	.590 OR .720
462408-8	.485 OR .580
462408-9	.535 OR .600
462408-0	.505 OR .560

- ▲ CUT TO LENGTH AT A95Y.
- ▲ ITEM 155 CAM REQ'D IN A-O-M WHEN USING THIS APPL.
- ▲ USE SPACERS (ITEM 156) AS REQ'D TO ACHIEVE PROPER ALIGNMENT OF WIRE GUIDE (ITEM 16) IN REFERENCE TO SHEAR BLOCK (ITEM 5)
- RECOMMENDED SPARE PARTS.
- ▲ LUBRICATE DAILY USING NO. 20 MACHINE OIL.
- GREASE LIGHTLY.

▲ REVERSE INLET PIPE FITTING ON PRESS SOLENOID WHEN RUNNING THIS APPLICATOR ON THE AIRMATIC AIR CYL. OF APPLICATOR SHOULD BE FULLY RETRACTED WITH PRESS-AT TOP DEAD CENTER, QUICK DISCONNECT ENGAGED.

1	683663-1	SPACER, SHEAR BLOCK	165
1	683664-1	SPACER, CYL. MOUNT. PLATE	164
2	21017-2	SCR. DRIVE (#2 X 19)	163
1	461264-1	PLATE IDENTIFICATION	162
1	468443-1	DEPRESSOR, WIRE	161
1	468441-1	RETAINER, DEPRESSOR	160
1	2-22278-0	SPRING, COMP (12000 X 1.00)	159
1	469173-1	BLOCK, DRAG STABILIZER	158
2	1-21899-3	WASHER, FLAT #3	157

4	463532-1	SPACER, FEED CYL. BLOCK	154
REF	462325-1	CAM, PULL BACK (A-O-M)	153
1	21021-3	NUT, HEX MACH (8-32 SELF LKG) DRAG	152
1	21018-6	NUT, HEX MACH (8-32) DRAG	151
1	2-21000-0	SCR. SKT HD CAP (6-32 X .50) SH.WR.	150
1	1-21002-6	SCR. BUT HD SKT CAP (6-32 X .25)	149
1	21024-2	WASHER, LOCK (NO. 4) STRIPPER	148
1	1-21000-4	SCR. SKT HD CAP (4-40 X .38) STRIPPER	147
1	2-21008-5	SCR. SKT SET (4-40 X .50 NYL) BLADE	146
1	2-21008-2	SCR. SKT HD CAP (6-32 X .75) WIRE BLD	145
2	2-21002-3	SCR. BUT HD SOC. CAP (8-32 X .62)	144

QTY	PART NO.	DESCRIPTION	ITEM NO.
-----	----------	-------------	----------

2	21045-3	RING, RETAINING 'C' (.187 DIA) FEED FINGER PIN	145
1	2-21000-2	SCR. SKT. HD. CAP (6-32 X .75) WIRE DR.	144
1	5-21028-1	PIN, SLOT SPR (.125 DIA X .50) ADJ ROD	143
1	4-21028-0	PIN, SLOT SPR (.093 DIA X .75) STR G PLATE	142
1	1-21030-1	PIN, DOWEL (.187 DIA X .50) LEVER	141
1	1-21030-6	PIN, DOWEL (.187 DIA X 1.25) HOUSING	140
1	21021-2	NUT, HEX LOCK (6-32) WIRE DRAG	139
REF	21024-5	WASHER, LOCK (NO 10) STRIP GUIDE ADJ BLOCK	138
REF	21024-5	WASHER, LOCK (NO 10) ADJ PLATE	137
5	21024-5	WASHER, LOCK (NO 10) FEED GUIDE ROD	136
REF	21024-3	WASHER, LOCK (NO 6) FRONT STRIP GUIDE	135
1	21024-4	WASHER, LOCK (NO 8) FEED FINGER	134
REF	21024-3	WASHER, LOCK (NO 6) STRIPPER	133
2	21899-1	WASHER, FLAT (NO 6) WIRE DRAG	132
1	21899-4	WASHER, FLAT (5/16 DIA) SCREW ADJ	131
1	21021-2	NUT, HEX MACH (6-32) SELF LOCKING	130
1	21019-8	NUT, HEX MACH (5/16-24) FEED CYL.	129
1	21018-5	NUT, HEX MACH (6-32) FEED ADJ	128
2	21018-4	NUT, HEX MACH (4-40) WIRE DRAG	127
2	2-21008-3	SCR. SKT. SET (4-40 X .38) WIRE DRAG	126
4	21024-3	WASHER, LOCK (NO 6) WIRE GUIDE	125
1	21009-2	SCR. SKT SET (1/4-20 X .25) (LOC-WEL) RAM	124
2	1-21000-9	SCR. SKT HD. CAP (6-32 X .38) WIRE GUIDE	123
1	62375-5	SCR. RD HD MACH (6-32 X 1.50) FEED ADJ	122
1	21001-2	SCR. SKT HD CAP (1/4-20 X .50) FEED CYL.	121
2	1-21001-2	SCR. SKT. 4D. 15/16" X 1/4" X 2.50 CYL. BRKT.	120
1	22733-8	SCR. BUT HD SKT CAP (8-32 X .38) (LOC-WEL) ANVIL	119
4	2-21002-9	SCR. BUT HD SKT CAP (10-32 X .75) CAP	118
3	17171-1	SCR. BUT HD SKT CAP (1/4-20 X .75) HOUSING	117
1	2-21002-7	SCR. BUT HD SKT CAP (10-32 X .50) SG ADJ BLOCK	116
REF	2-21002-2	SCR. BUT HD SKT CAP (8-32 X .50) SHEAR	115
2	2-21002-0	SCR. BUT HD SKT CAP (8-32 X .25) R STRIP GUIDE	114
2	21024-6	WASHER LOCK (1/4) FEED CYL. BRKT.	113
1	1-21002-8	SCR. BUT HD SKT CAP (6-32 X .50) CAM	112
2	21001-5	SCR. SKT HD CAP (1/4-20 X .88) CYL. BRKT.	111
1	23030-1	SCR. SKT HD CAP (6-32 X .25) (LOC-WEL) CP DISC	110
1	376165	WASHER, CLAMP	109
2	2-21000-6	SCR. SKT HD CAP (8-32 X .38) DEPRESSOR	108
1	2-22603-0	SCR. HEX HD MACH (8-32 X .31) FEED FINGER	107
2	2-21000-0	SCR. SKT HD CAP (6-32 X .50) F STRIP GUIDE	106
3	2-21002-2	SCR. BUT HD CAP (8-32 X .50) STRIPPER	105
2	3-21000-7	SCR. SKT HD CAP (10-32 X .75) FEED ROD GUIDE	104
2	3-21000-6	SCR. SKT HD CAP (10-32 X .62) FEED ADJ BLOCK	103
REF	3-21000-4	SCR. SKT HD CAP (10-32 X .38) SG ADJ BLOCK	102
2	3-21000-4	SCR. SKT HD CAP (10-32 X .38) PIVOT BLOCK	101
4	1-22170-8	FIN. COTTER (.06 DIA X .50 LG.)	79
2	388639-6	ROD 1.00 GUIDE	78
1	22294-6	ELBOW, 90°	77
1	465729-1	PLUG, AIR CYLINDER	76
1	468528-1	CYLINDER, AIR	75
1	458109-1	WASHER, SPECIAL	74
3	3-21002-5	SCR. BUT HD. SKT CAP (1/4-20 X .75) CYL. BRKT.	73
1	690603-1	SPRING, ASSIST	72
1	690517-1	SPACER	71
1	22594-8	NUT, HEX	70
1	240628-1	PLATE, ADJUSTMENT	69
1	240626-1	SHAFT, PIVOT	68
1	240633-1	BUSHING	67
1	455680-1	LEVER, INTERMEDIATE	66
1	240629-1	BLOCK, PIVOT	65
1	240632-2	SCREW, ADJUSTMENT FEED ROD	64
1	240659-3	PIN, CAM ROLLER	63
1	240658-1	ROLLER, CAM	62
1	454398-2	ROD, FEED	61
1	454178-1	GUIDE, FEED ROD	60

QTY		PART NO		DESCRIPTION		ITEM NO.
CRIMPING DATA						
PAD LTR	CRIMP HEIGHT	WIRE SIZE	APPLICATOR WILL APPLY			
A	.040	#26+.018 DIA SOLID	62382			
B	NOT	USED				
C	NOT	USED				
D	NOT	USED				
CRIMP	SIZE	TYPE	FEED	APPL INST		
WIRE	.048	"0"	.250	A18040		
INSUL	.060	"0"				
WIRE RANGE	INSULATION RANGE	PRESS NO				
#26	.038-.042					
REMARKS						
AMPOMATOR (FEED SIDE ONLY)						
APPLICATION PER 114-2013						
THIS APPLICATOR DESIGNED TO PRODUCE SOLID WIRE LENGTHS OF .480, .485, .500, .505, .535, .560, .570, .590, .600, .640, .650, .670, .700, .720 (SEE NOTE A)						

REMARKS	NO	REV
APPL USED ON MACHINE PART NO	MACH SERIAL NO	DISTRIBUTION
CUSTOMER NAME	APPL SERIAL NO	ORIGINAL
ADDRESS	PURCHASE ORDER	CUSTOMER COPY
CITY	ENG APP	FIELD ENG COPY

ECN R-7694	SET UP GAGE 10-1
ECN R 6261	DR 679 APP 679
REV PER ECN R 7073	CHK
REV PER ECN R 4430	REL
REV PER ECN R 3913	NAME
REV ITEM 78	LOC
REV ITEM 78	D No
REV ITEM 78	REV

