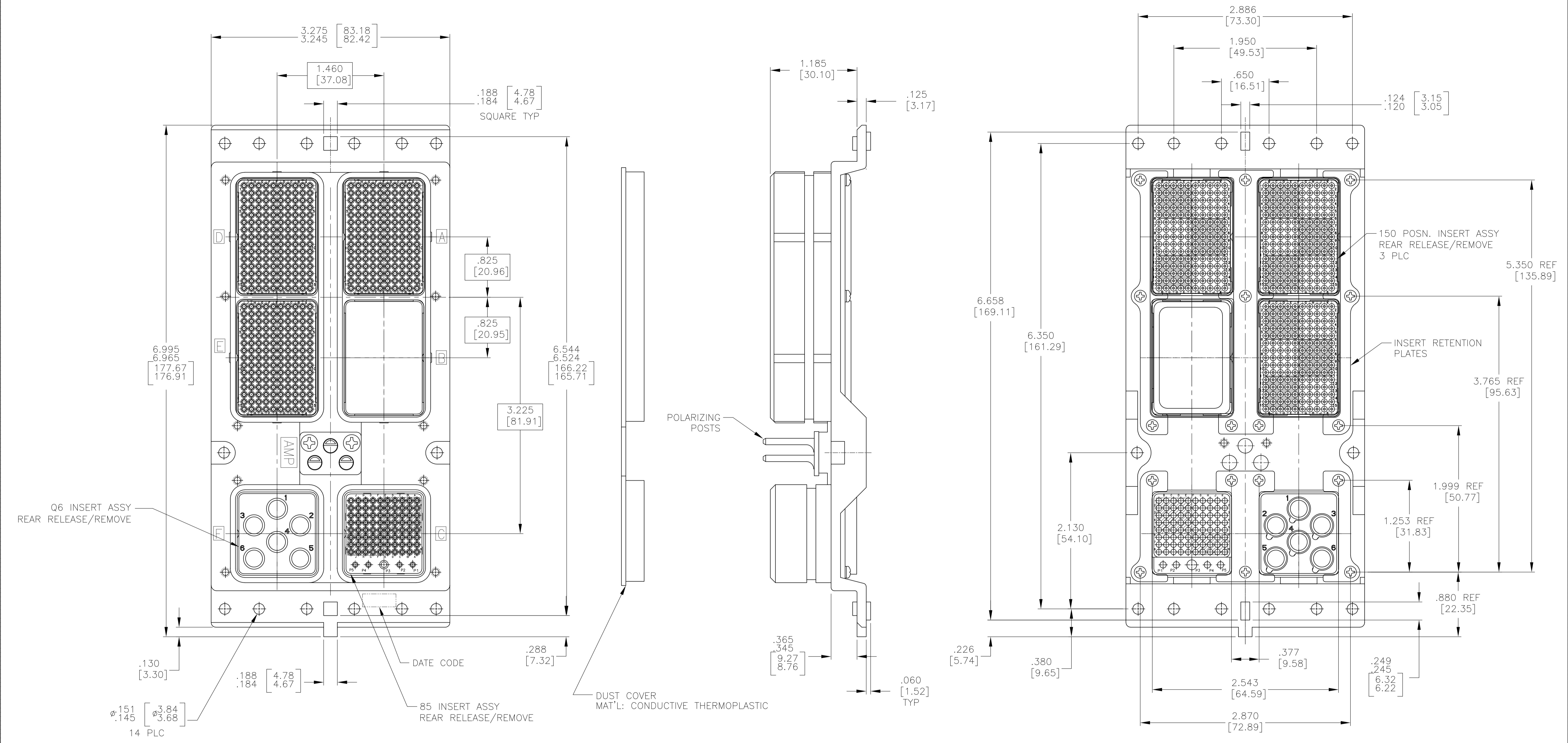


REVISONS		DATE	BY	APP'D
NO.	DESCRIPTION			
C	REV PER ECO 10-012618	6-16-10	CT	KT



- CONNECTOR DIMENSIONS ARE PER ARINC 600 SPECIFICATION
- DUST COVER INSTALLED FOR SHIPPING. QTY = 2
- KEYING SHOWN IN POSITION "01" FOR REFERENCE ONLY. SEE TABLE FOR KEYING POSITION. FOR POSITION "00" KEYING SHIPPED UNASSEMBLED.
- CONTACTS INCLUDED WITH ASSEMBLY BUT NOT INSTALLED:
 SIZE 22 CRIMP PIN CONTACT; TE PART NO. 208262-3; QTY=530
 SIZE 20 CRIMP SOCKET CONTACT; TE PART NO. 208267-2; QTY=4
 SIZE 16 CRIMP SOCKET CONTACT; TE PART NO. 208270-2; QTY=1
 SIZE 8 QUADRAX CONTACT; TE PART NO. 1445693-1; QTY=6

COMPONENT	MATERIAL	FINISH
SHELL	DIE CAST ALUMINUM PER ASTM-B-85	CHEMICAL CONVERSION COATING PER MIL-C-5541 TYPE II, CLASS 3 CHROMATE
INSERT RETENTION PLATES	ALUMINUM ALLOY PER ASTM-B-209	CHEMICAL CONVERSION COATING PER MIL-C-5541 TYPE II, CLASS 3 CHROMATE
SCREWS AND LOCKWASHERS	STEEL	TRIVALENT CHROMATE OVER ZINC PLATE
POLARIZING POSTS	ZINC ALLOY PER ASTM-B-86	ELECTROLESS NICKEL PER MIL-C-26074, CLASS 4, GRADE B
POLARIZING POST RETAINING PLATE	ALUMINUM ALLOY PER ASTM-B-209	BLUE ANODIZED PER MIL-A-8625
150 & 85 INSERTS	THERMOSET	-
Q6 INSERT	ALUMINUM ALLOY PER ASTM-B-209	ELECTROLESS NICKEL PER MIL-C-26074, CLASS 4, GRADE B
BLANK INSERT	ALUMINUM ALLOY	CHEMICAL CONVERSION COATING PER MIL-C-5541, CLASS 1A

"01"	2101927-1
KEYING POSITION	PART NO.

THIS DRAWING IS A CONTROLLED DOCUMENT.

DIMENSIONS: INCHES [mm]	TOLERANCES UNLESS OTHERWISE SPECIFIED:	DRAWING NO. 2101927	REV. C
0 PLC ± .005 [0.13]	1 PLC ± .005 [0.13]	2 PLC ± .005 [0.13]	3 PLC ± .005 [0.13]
4 PLC ± .005 [0.13]	ANGLES ± .5°	SIZE A1	SCALE 1.5:1
MATERIAL SEE TABLE	FINISH SEE TABLE	WEIGHT	SHEET 1 OF 1

APPROVED: K. THACKSTON
 Tyco Electronics Corporation
 Harrisburg, Pa 17105-3608
 PRODUCT SPEC
 APPLICATION SPEC
 CUSTOMER DRAWING