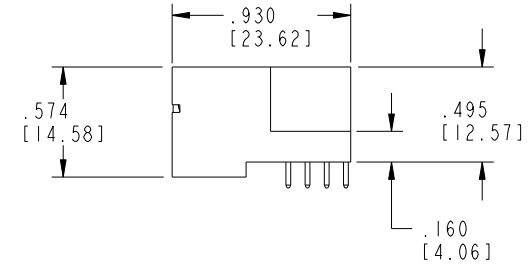
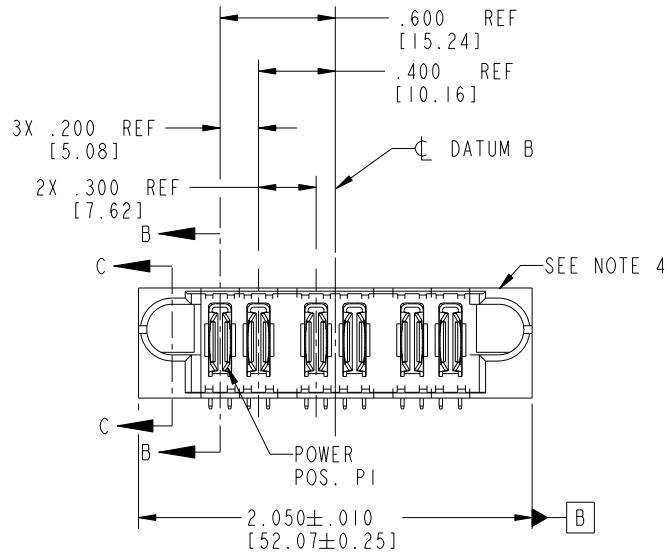
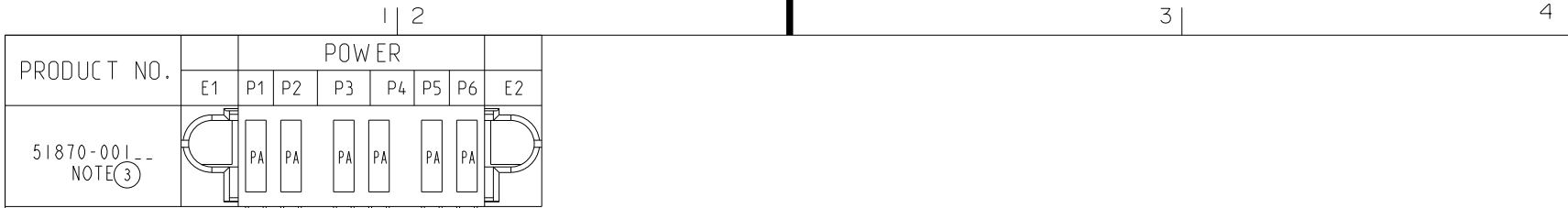


Tous droits strictement réservés. Reproduction ou communication a des tiers interdite sous quelque forme que ce soit sans autorisation écrite du propriétaire. Propriété de c FCI. Droits de reproduction FCI.



All rights strictly reserved. Reproduction or issue to third parties in any form whatever is not permitted without written authority from the proprietor. Property of FCI. Copyright FCI.



CODE	DIM "M" MATING LENGTH	CONTACT TYPE
PA	N/A [N/A]	POWER

mat'l code				SEE NOTE 2		tolerances unless otherwise specified		CUSTOMER		 www.fciconnect.com	
lir	ecn no.	dr	date	linear	.XX±.01/0.X±0.3		COPY		title		
A	V10809	EKK	01-20-01		.XXX±.005/0.XX±0.13		projection		6P		
B	V20776	JWS	05-21-02	angles	.XXX±.0020/0.XXX±0.051				RIGHT ANGLE SOLDER HEADER		
C	DG05-0064	SW	04/05/05		0°±2°				product family		
D	DG08-0251	W D	09/16/08	dr	J. SHAFFER	05-21-02	INCH/MM		PwrBlade		
E	DG08-0272	W D	09/28/08	enrg	M. MOSTOLLER	05-20-02	scale		size		code
				chr	M. MOSTOLLER	05-21-02	1:1		A		213
				appd	M. MOSTOLLER	05-21-02			51870		sheet
				sheet index	revision sheet	E 1	E 2	E 3	E 4	1 of 4	

Pro/E

PDM: Rev: E

STATUS: Released

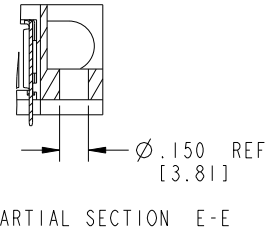
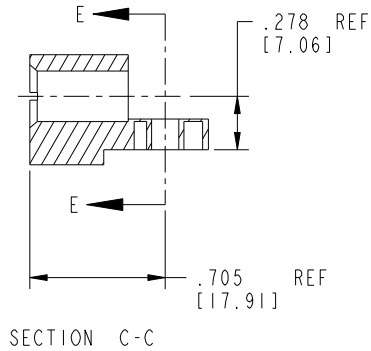
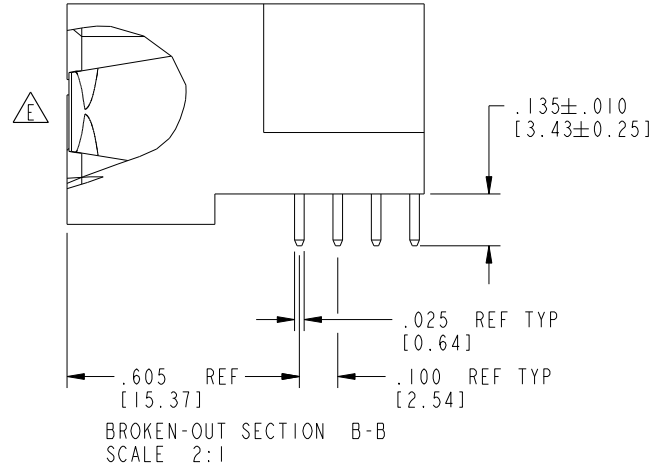
Printed: Dec 20, 2010

Tous droits strictement réservés. Reproduction ou communication a des tiers interdite sous quelque forme que ce soit sans autorisation écrite du propriétaire. Propriété de c FCI. Droits de reproduction FCI.

All rights strictly reserved. Reproduction or issue to third parties in any form whatever is not permitted without written authority from the proprietor. Property of FCI. Copyright FCI.



PRODUCT NUMBER  
51870-001--  
NOTE ③



mat'l code		SEE NOTE 2		tolerances unless otherwise specified		CUSTOMER		FCI		www.fciconnect.com	
ltr	ecn no.	dr	date	linear	.XX±.01/0.X±0.3	projection	COPY	title 6P			
E					.XXX±.005/0.XX±0.13	INCH/MM		RIGHT ANGLE SOLDER HEADER			
				angles	.XXX±.0020/0.XXX±0.051	scale		product family PwrBlade		code 213	
				dr	J. SHAFFER 05-21-02	1:1	A	size 51870		sheet 2 of 4	
				enrg	M. MOSTOLLER 05-20-02						
				chr	M. MOSTOLLER 05-21-02						
				appd	M. MOSTOLLER 05-21-02						
sheet index	revision sheet										

cage code 22526

Pro/E

PDM: Rev: E

STATUS: Released

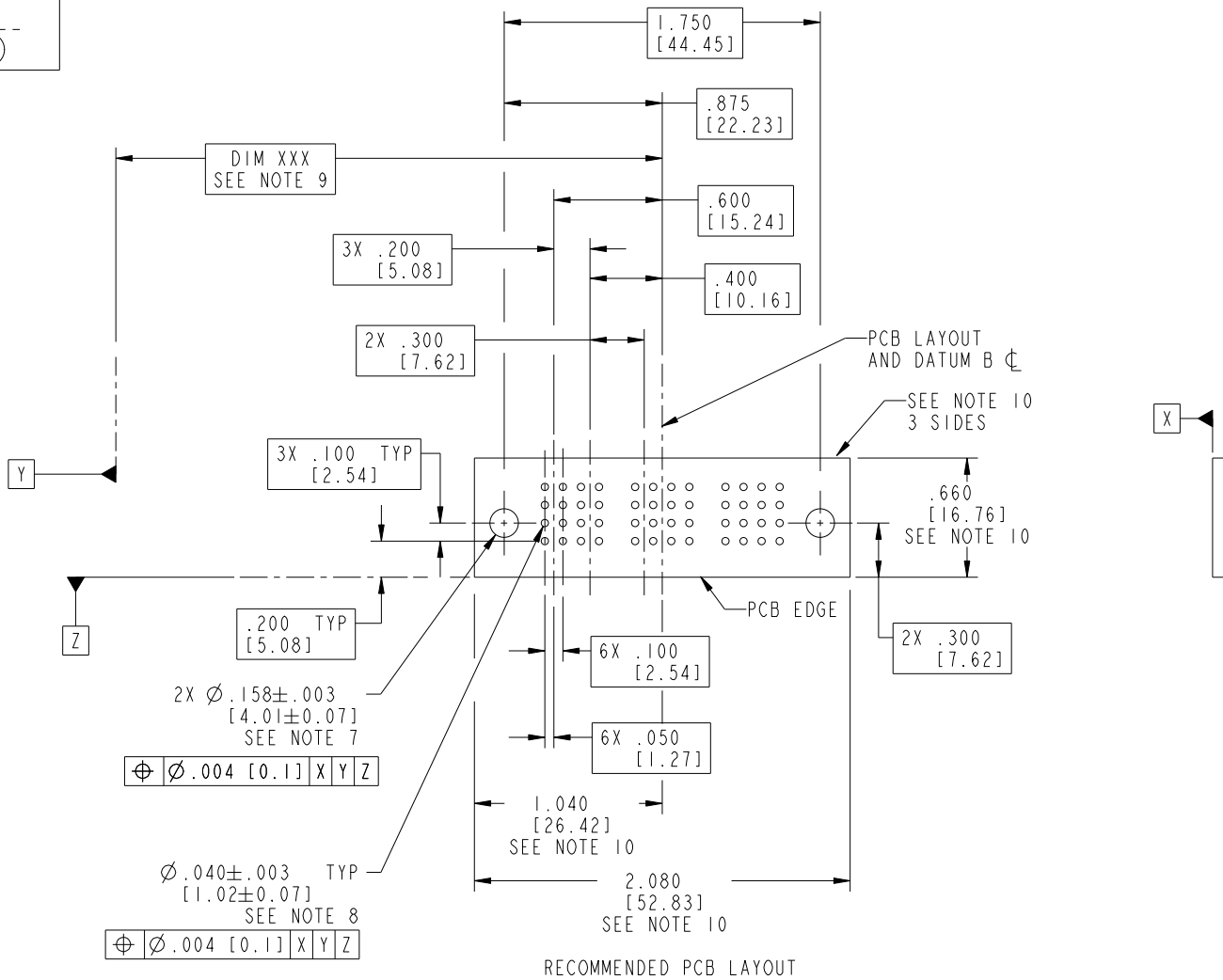
Printed: Dec 20, 2010

Tous droits strictement réservés. Reproduction ou communication a des tiers interdite sous quelque forme que ce soit sans autorisation écrite du propriétaire. Propriété de c FCI. Droits de reproduction FCI.



All rights strictly reserved. Reproduction or issue to third parties in any form whatever is not permitted without written authority from the proprietor. Property of FCI. Copyright FCI.

PRODUCT NUMBER  
51870-001--  
NOTE ③



RECOMMENDED PCB LAYOUT

mat'l code		SEE NOTE 2		tolerances unless otherwise specified		CUSTOMER		FCI		www.fciconnect.com	
lfr	ecn no.	dr	date	linear	.XX±.01/0.X±0.3	projection	COPY	title 6P			
E				angles	.XXX±.005/0.XX±0.13	INCH/MM		RIGHT ANGLE SOLDER HEADER			
				dr	.XXX±.002/0.XXX±0.051	scale		product family PwrBlade		code 213	
				engr	J. SHAFFER 05-21-02	1:1		size		sheet 3 of 4	
				chr	M. MOSTOLLER 05-20-02			dwg no		51870	
				appd	M. MOSTOLLER 05-21-02						
sheet index	revision sheet										

Pro/E

PDM: Rev: E

STATUS: Released

Printed: Dec 20, 2010

cage code 28526

PRODUCT NUMBER  
 51870-001--  
 NTOE (3)

NOTES:

1. DIMENSIONS AND TOLERANCES ARE IN ACCORDANCE WITH ASME Y14.5M, 1994 UNLESS OTHERWISE SPECIFIED.

CONNECTOR NOTES:

- (2.) HOUSING MATERIAL: UL 94 V-0 GLASS FILLED HIGH-TEMP THERMOPLASTIC  
 POWER CONTACT MATERIAL: COPPER ALLOY  
 SIGNAL PIN MATERIAL: COPPER ALLOY

△ 3. SEE ITEM 1 & 2 IN PRINT 10064183 FOR PLATING SPEC OF 51870-001 AND 51870-001LF RESPECTIVELY.

- (4.) MANUFACTURER'S NAME, P/N, AND DATE CODE TO APPEAR ON THIS SURFACE.
- 5. PRODUCT SPECIFICATION GS-12-149.  
 APPLICATION SPECIFICATION BUS-20-067.

PCB NOTES:

- 6. ALL HOLE DIAMETERS ARE FINISHED HOLE SIZE.
- 7. MOUNTING HOLES, WHERE APPLICABLE, ARE UNPLATED.

(8.)  $\varnothing .0453 \pm 0.0010$  [1.151  $\pm$  0.025] DRILLED HOLES PLATED WITH  
 0.0003 [0.008] MIN SnPb OVER .001 [0.03]  
 TO .003 [0.08] Cu PLATING TO ACHIEVE  
 $\varnothing .040 \pm .003$  [1.02  $\pm$  .07] HOLE.

(9.) "DIM XXX" TO BE DETERMINED BY THE CUSTOMER.

(10.) CONNECTOR KEEP-OUT ZONE.

11. A △ SYMBOL WILL BE NEXT TO ANY DIMENSION, VIEW, OR NOTE WHICH HAS BEEN MODIFIED WITH THE CURRENT DRAWING REVISION.

mat'l code				SEE NOTE 2		tolerances unless otherwise specified		CUSTOMER		FCJ		www.fciconnect.com	
lfr	ecn no.	dr	date	linear	.XX±.01/0.X±0.3		COPY		projection	title			6P
E					.XXX±.005/0.XX±0.13		INCH/MM			RIGHT ANGLE SOLDER HEADER			
				angles	.XXX±.0020/0.XXX±0.051		INCH/MM		product family	PwrBlade		code	
					0°±2°		1:1			size		213	
				dr	J. SHAFFER	05-21-02	scale		A	51870		4 of 4	
				engr	M. MOSTOLLER	05-20-02							
				chr	M. MOSTOLLER	05-21-02							
				appd	M. MOSTOLLER	05-21-02							
sheet index		revision sheet											

Tous droits strictement réservés. Reproduction ou communication a des tiers interdite sous quelque forme que ce soit sans autorisation écrite du propriétaire. Propriété de c FCI. Droits de reproduction FCI.



All rights strictly reserved. Reproduction or issue to third parties in any form whatever is not permitted without written authority from the proprietor. Property of FCI. Copyright FCI.