

**Product number C11506_BROOKE-S**

Family	Brooke
Type	Reflector
LED	BXRA ES Rectangle
Color	Metal
Diameter	45 mm
Height	19.5 mm
Style	Round
Optic Material	PC
Holder Material	-
Fastening	["socket"]
Status	Production ready

FWHM	24 degrees
Efficiency	-
cd/lm	-
Gerber File	Available

This product developed for Molex connector. More information from address http://rhu004.sma-promail.com/SQLImages/kelmscott/Molex/PDF_Images/987650-5541.PDF

**Product number C11507_BROOKE-M**

Family	Brooke
Type	Reflector
LED	BXRA ES Rectangle
Color	Metal
Diameter	45 mm
Height	19.5 mm
Style	Round
Optic Material	PC
Holder Material	-
Fastening	["socket"]
Status	Production ready

FWHM	32 degrees
Efficiency	-
cd/lm	-
Gerber File	Available

This product developed for Molex connector. More information from address http://rhu004.sma-promail.com/SQLImages/kelmscott/Molex/PDF_Images/987650-5541.PDF

**Product number C11508_BROOKE-W**

Family	Brooke
Type	Reflector
LED	BXRA ES Rectangle
Color	Metal
Diameter	45 mm
Height	19.5 mm
Style	Round
Optic Material	PC
Holder Material	-
Fastening	["socket"]
Status	Production ready

FWHM	50 degrees
Efficiency	-
cd/lm	-
Gerber File	Available

This product developed for Molex connector. More information from address http://rhu004.sma-promail.com/SQLImages/kelmscott/Molex/PDF_Images/987650-5541.PDF

NOTE: The typical divergence will be changed by different color, chip size and chip position tolerance. The typical total divergence is the full angle measured where the luminous intensity is half of the peak value.



PRODUCT DATASHEET

Brooke series

last update 23/3/2016

GENERAL INFORMATION

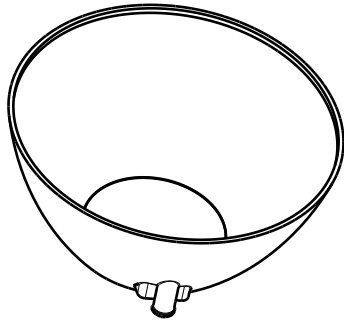
- Product series especially designed & optimized for BXRA ES Rectangle series of LEDs.
- Special care taken to make light distribution as uniform as possible.
- Reflector is made of aluminium coated PC (120 degrees of Celcius / 248 degrees of Fahrenheit) with protective lacquer (short term 100 degrees of Celcius / 212 degrees of Fahrenheit).

D

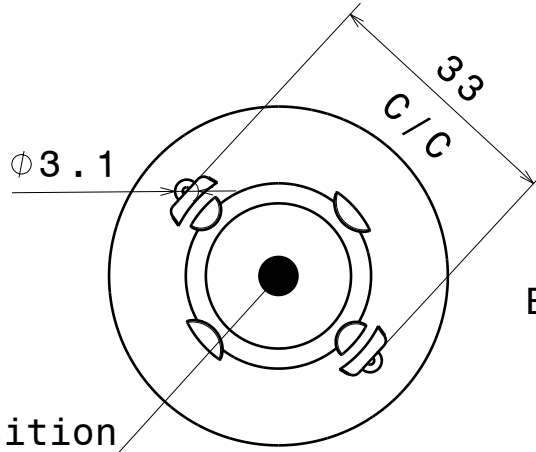
C

B

A

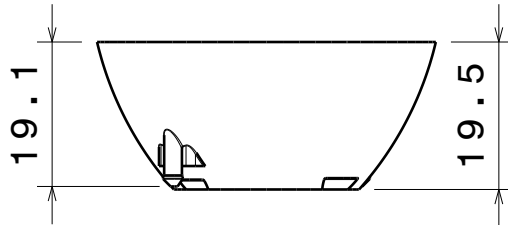


Isometric view
Scale: 1:1

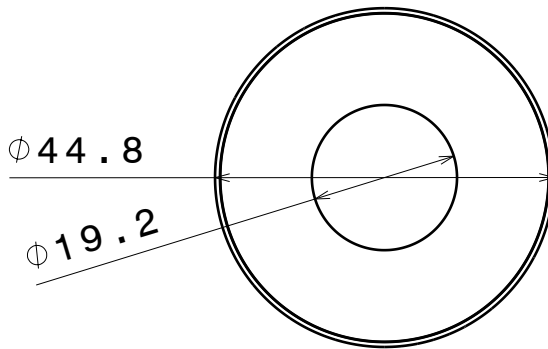


Bottom view

LED position



Front view

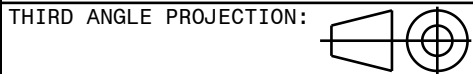


Top view

Designed to be used with connector

Tolerances if not otherwise shown
According to DIN ISO 2768-1
Linear measures:
Up to 30mm class M, otherwise class C.
According to DIN ISO 2768-2
Form and position: class L

LEDiL LediL Oy
Salorankatu 10
FIN 24240 SALO
Finland



DRAWING TITLE
C11506_BROOKE-S

This drawing is the property of LEDiL Oy. It may not be reproduced, copied or communicated without a written agreement with LEDiL Oy."

SIZE	PART NUMBER
A4	C11506

SCALE	1:1	WEIGHT	-	SHEET	1/1
-------	-----	--------	---	-------	-----

D

A