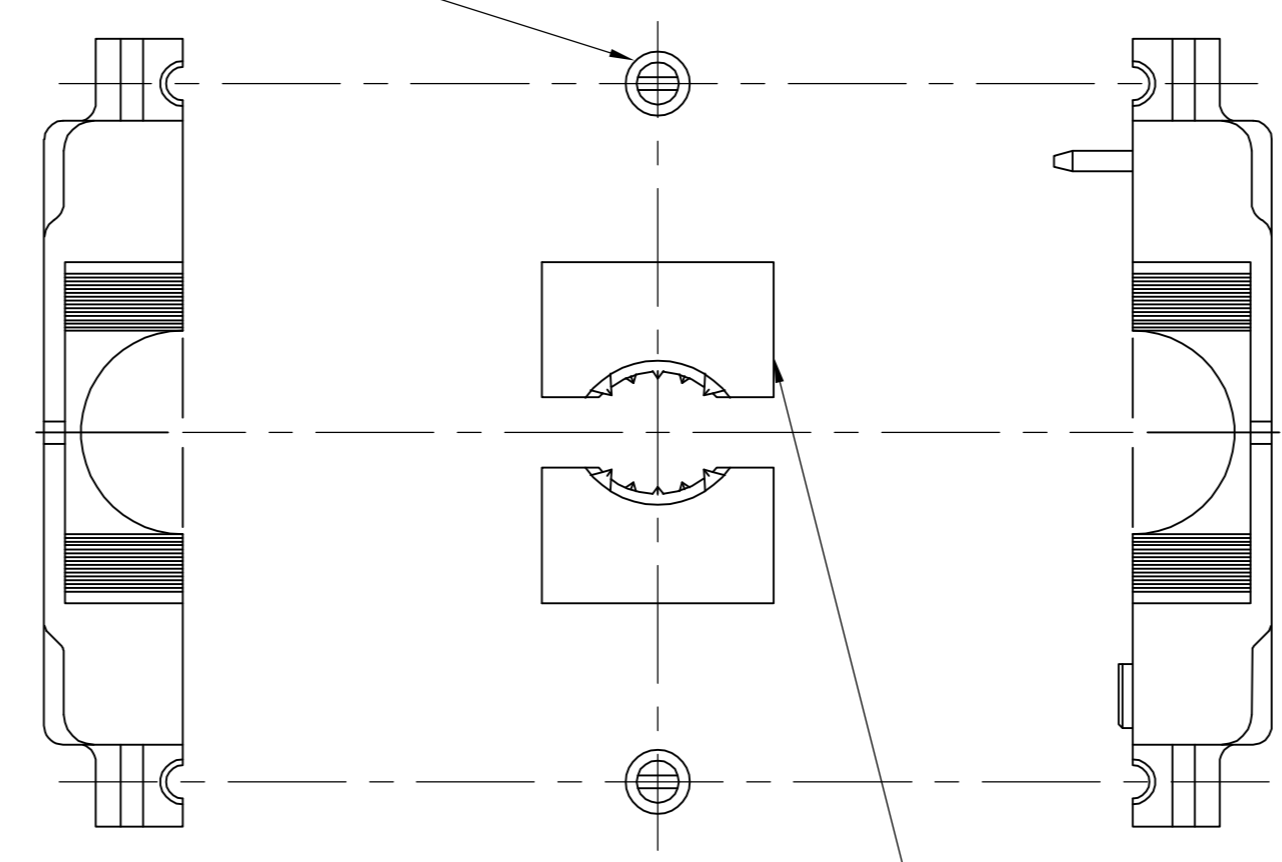
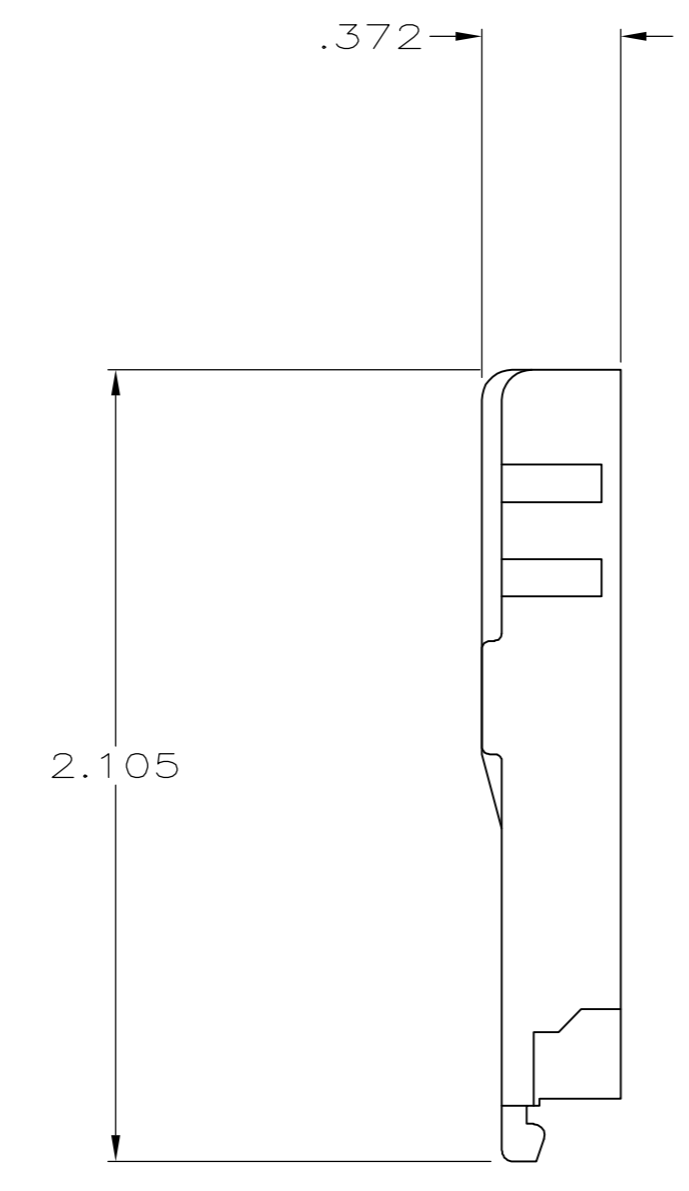


MOUNTING SCREW, STEEL
 TYPICAL (2)



CABLE CLAMP WEDGE SET, QUANTITY:2
 ONE SET FOR .190 DIA TO .380 DIA
 CABLE AND ONE SET FOR .380 DIA
 TO .530 DIA CABLE



CABLE CLAMP
 HALF, QUANTITY:2

25 POSITION AMPLIMITE
 CONNECTOR, SHOWN REFERENCE ONLY

1. ALL PARTS ARE PACKAGED UNASSEMBLED.
 2. PARTS PACKAGED AS A UNIT KIT.
 3. PARTS INDIVIDUALLY BULK PACKED AND SHIPPED AS A UNIT PACKAGE.
- ⚠️ MOLDED PARTS: ABS MOLDING COMPOUND, COLOR BLACK.
 SCREWS: STEEL.
- ⚠️ SCREWS: ZINC PLATED CLEAR CHROMATE COATED.

5747824-1
 PART
 NUMBER

THIS DRAWING IS A CONTROLLED DOCUMENT.		DWN R. RICHARDSON 15SEP05		Tyco Electronics Corporation Harrisburg, PA 17105-3608	
DIMENSIONS: INCHES		CHK C. ROHDE 15SEP05		NAME M. WALMSLEY 15SEP05	UNIVERSAL CABLE CLAMP KIT SIZE 3, 25 POSITION, AMPLIMITE HD-20
TOLERANCES UNLESS OTHERWISE SPECIFIED:		PRODUCT SPEC		RESTRICTED TO	
0 PLC ± - 1 PLC ± - 2 PLC ± - 3 PLC ± .005 4 PLC ± - ANGLES ± -		APPLICATION SPEC		SIZE CAGE CODE DRAWING NO	
MATERIAL	FINISH	WEIGHT	A1 00779 C=5747824		SCALE 2:1 SHEET 1 OF 1 REV 0
CUSTOMER DRAWING					