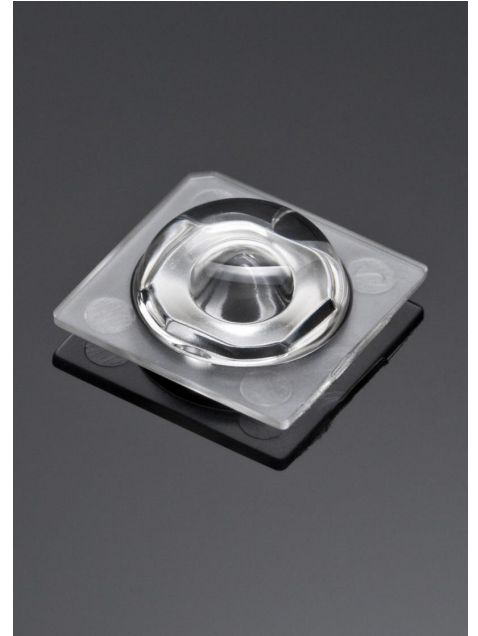


DETAILS

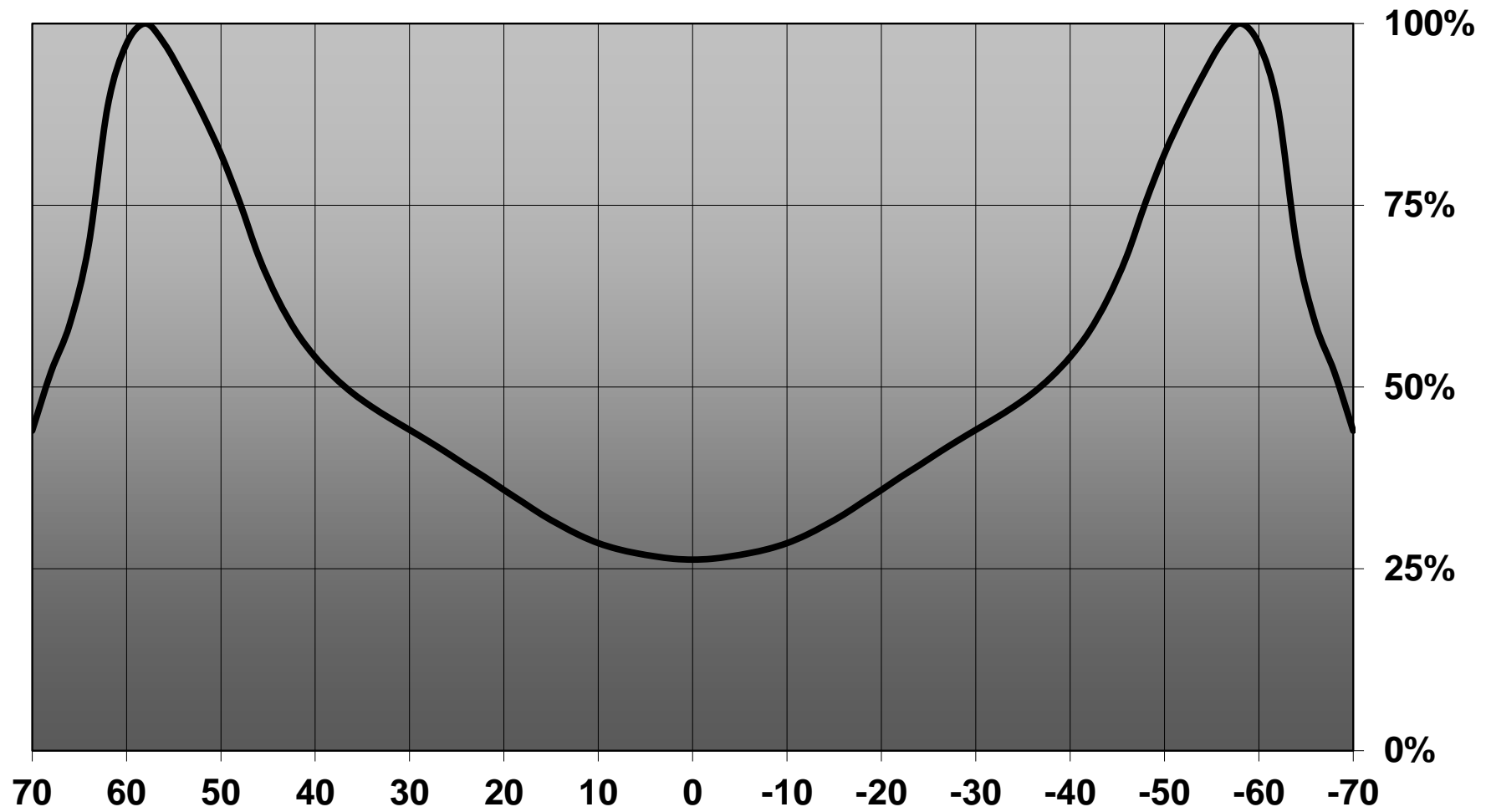
Product Number	CA12474_SIRI-A
Family	Siri
Type	Assembly
Color	clear
Diameter	13,9 mm
Height	4,6 mm
Style	square
Optic Material	PMMA
Holder Material	
Fastening	pin, tape
Status	production ready
ROHS Compliant	Yes
Date Updated	19/12/2013

OPTICAL PROPERTIES

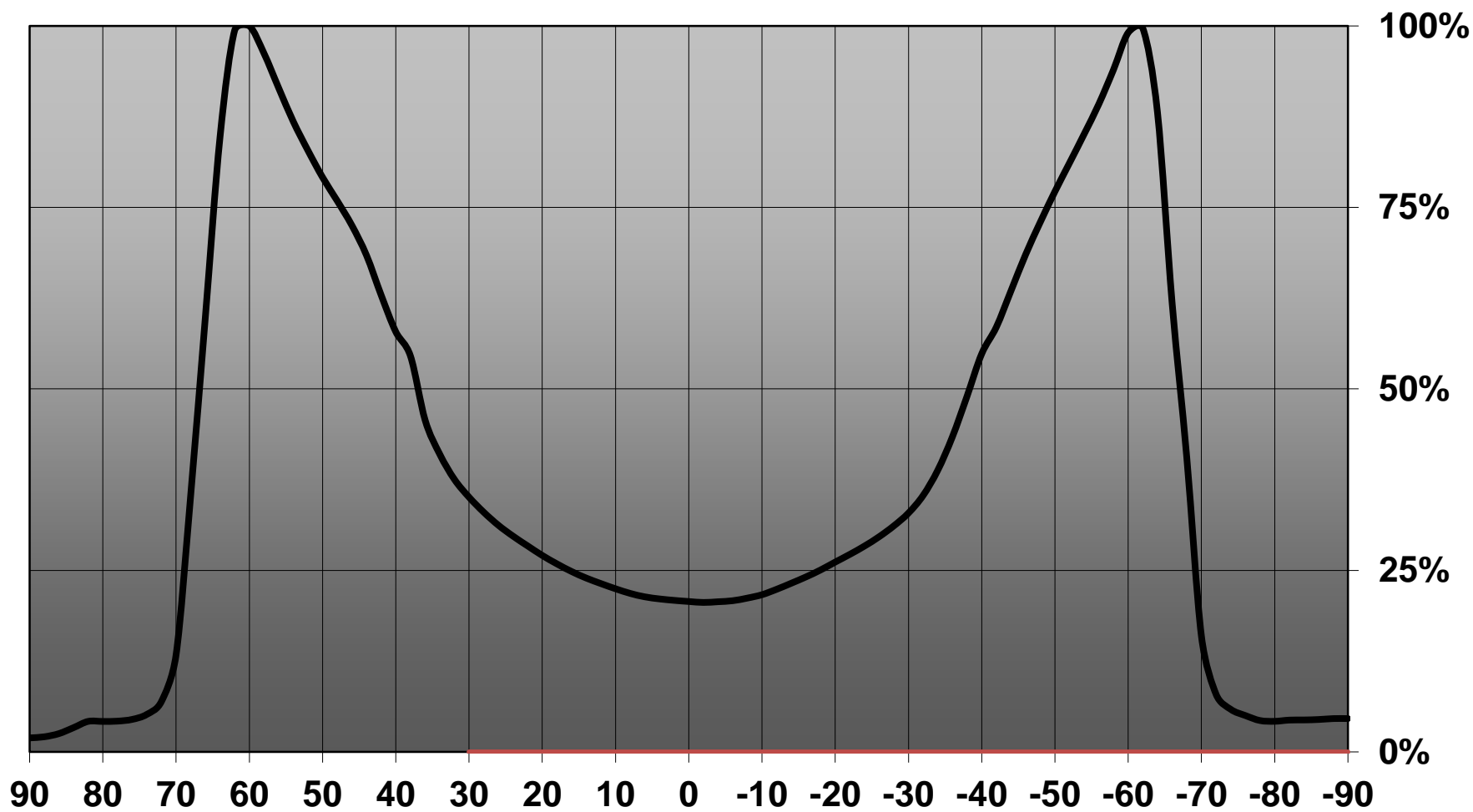
LED	Viewing	Light	Effi-	cd/lm	Connector
	Angle	Beam	ciency		
XT-E	74+137 deg	Very Wide	95 %	0.300	-
XP-G2	142 deg	Very Wide	94 %	0.300	-
LUXEON R	75+134 deg	Very Wide	95 %	0.400	-
NVSxx19A	58+132 deg	Very Wide	95 %	0.330	-
Oslon Square PC	66+134 deg	Very Wide	95 %	0.310	-
Z8Y22P	sim: 116+132	Very Wide	sim: 97 %	sim: 0.290	-



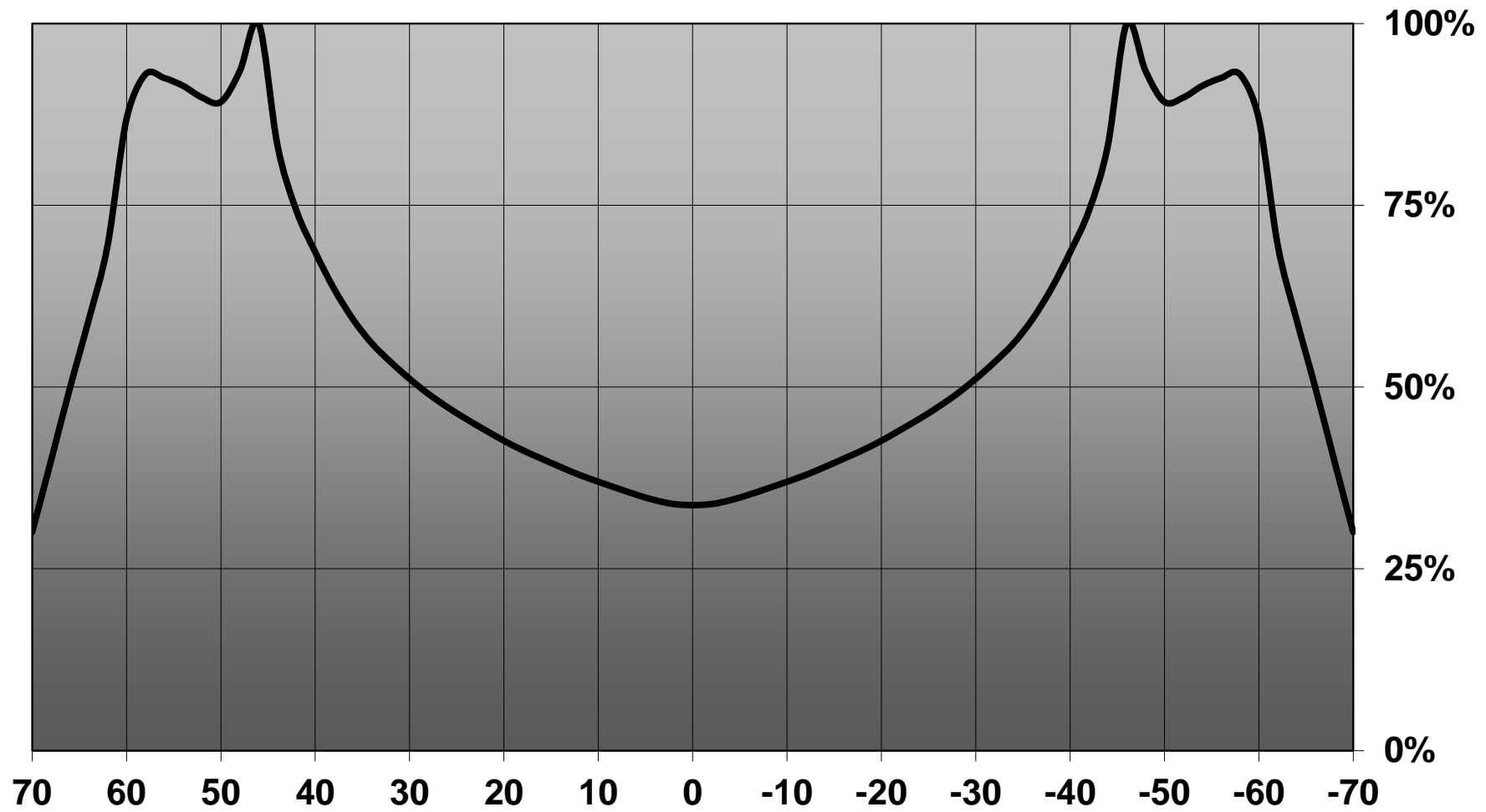
Relative intensity of Siri-A_(XT-E)



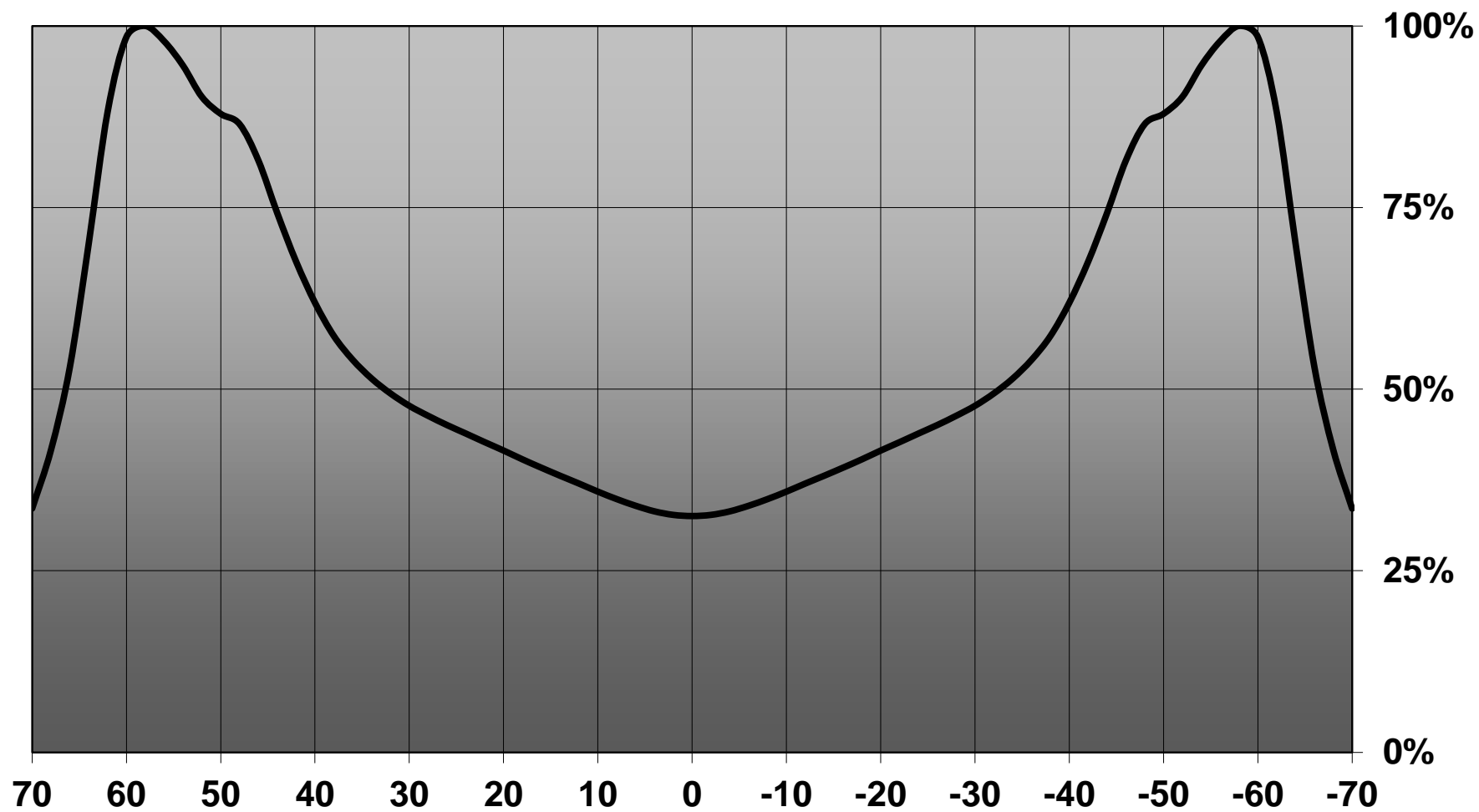
Relative intensity of CA12474_SIRI-A-LuxR



Relative intensity of Siri-A_(N219)



Relative intensity of Siri-A_(SQ_EC)



D

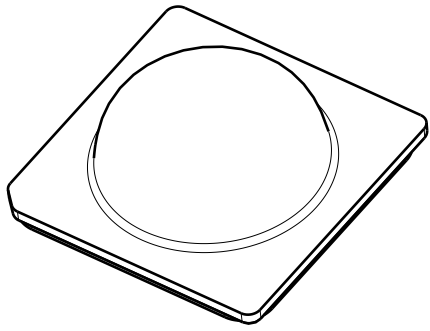
C

B

A

4

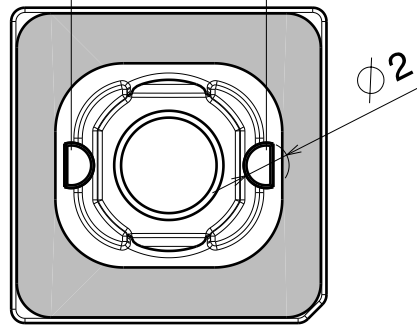
4



Isometric view

positioning pins

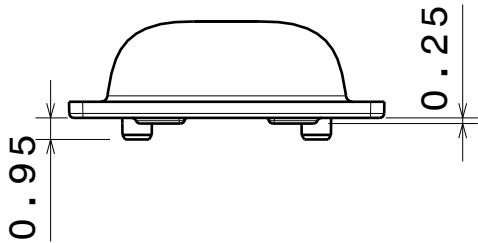
8.6



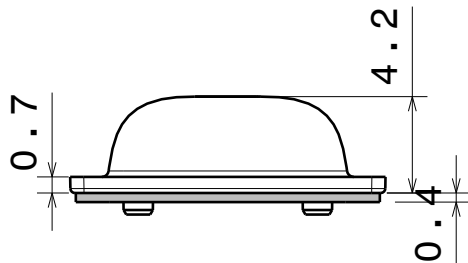
Bottom view

3

3



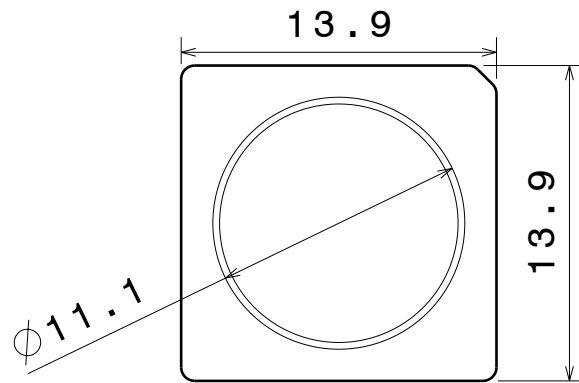
Front view of C12473_Siri-A without adhesive tape



Front view

2

2



Top view

MATERIALS
 Lens: PMMA
 Tape: PU FOAM

This drawing is our property.
 It can't be reproduced
 or communicated without
 our written agreement.



L
S
F
F

e
i
i
n

d

DRAWING TITLE

Datasheet Siri-A-tape

1

1

DRAWN BY

DATE

12.12.2011

CHECKED BY

DATE

12.12.2011

DESIGNED BY

DATE

12.12.2011

SIZE

A4

DRAWING NUMBER

CA12474

REV

1

SCALE

3:1

WEIGHT (g)

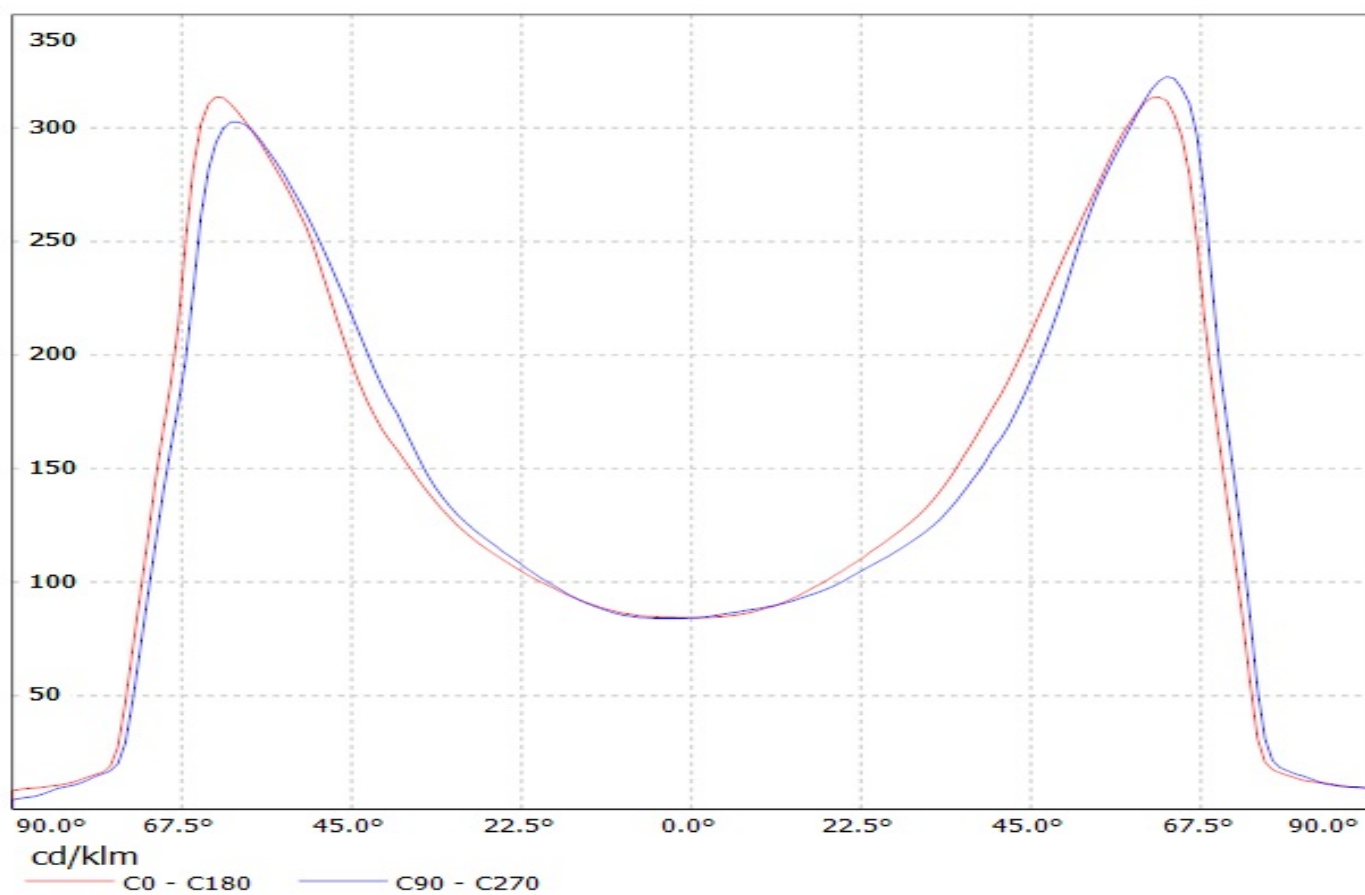
SHEET

1/1

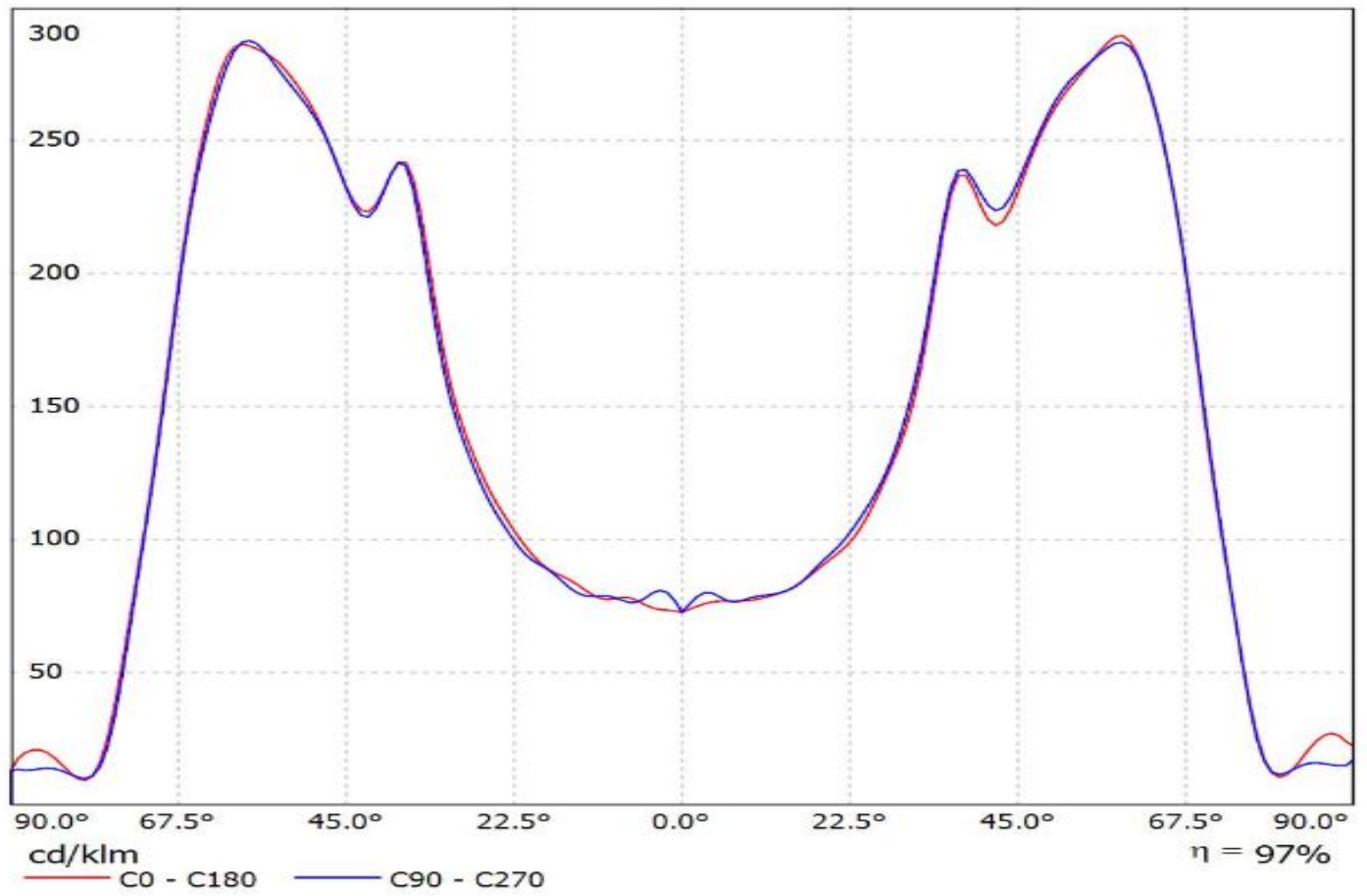
D

A

Luminaire: LEDiL Oy CA12474 SIRI-A (XP-G2) Eff. 94%
Lamps: 1 x CREE_XP-G2_(XPGBWT-H1-7B4-R4-0-04)_105lm@250mA_P=0.755848W_I=249.9mA

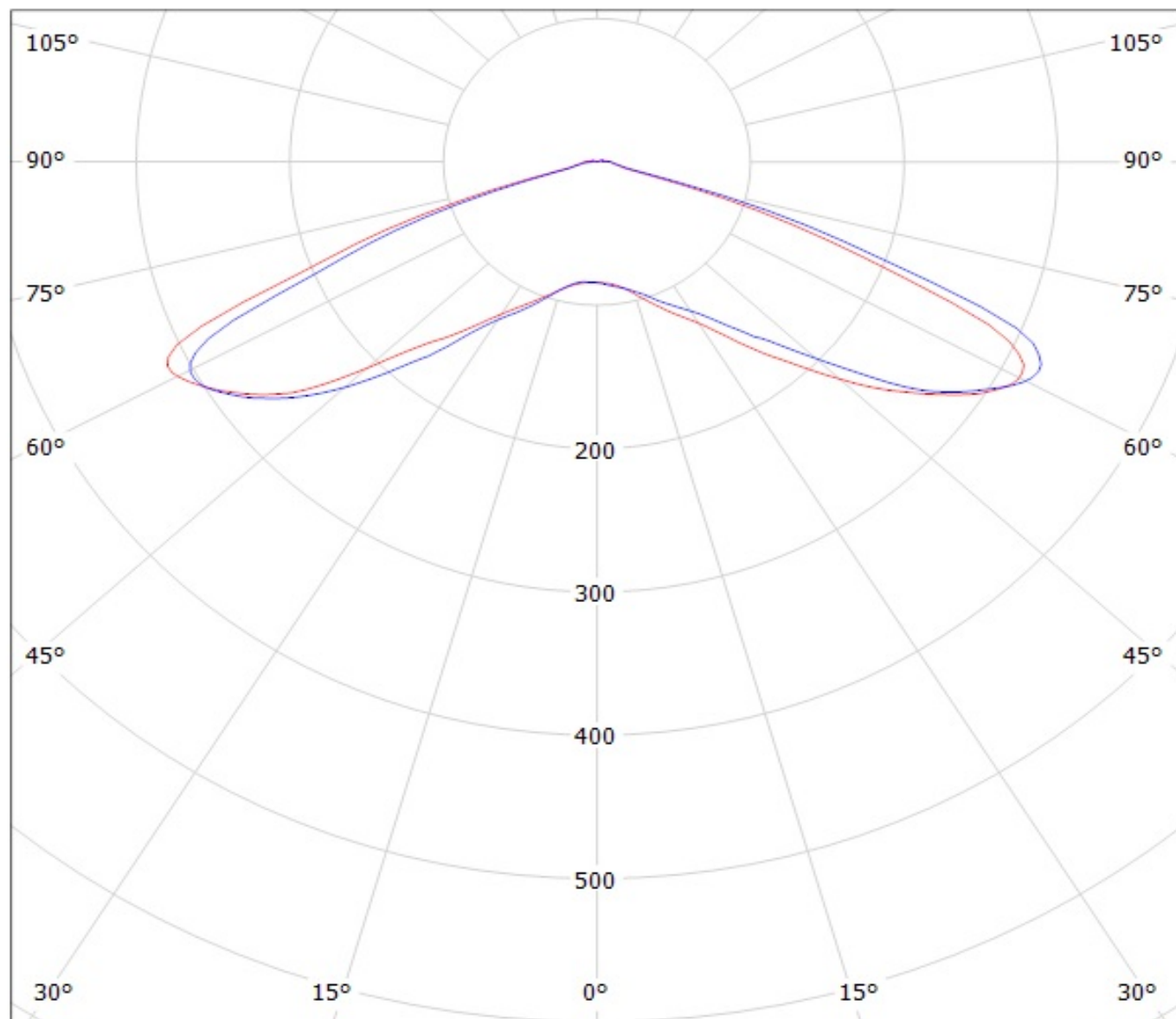


Luminaire: Ledil Oy CA12474_SIRI-A_SEOUL_Z8Y22+_SIMULATED
Lamps: 1 x SEOUL Z8Y22+



Luminaire: LEDiL Oy CA12474_SIRI-A_(XP-G2) Eff. 94%

Lamps: 1 x CREE_XP-G2_(XPGBWT-H1-7B4-R4-0-04)_105lm@250mA_P=0.755848W_I=249.9mA



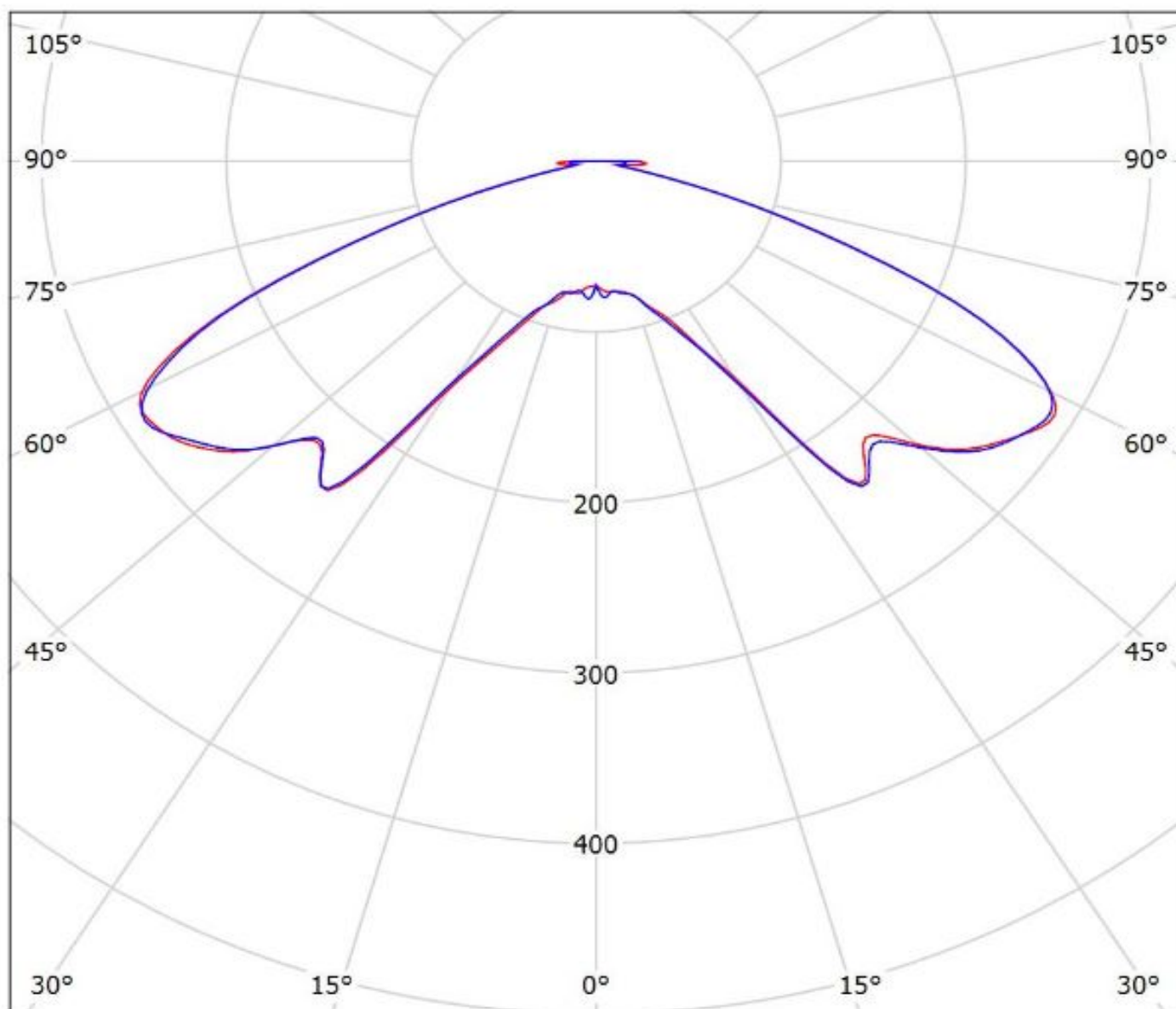
cd/klm

— C0 - C180

— C90 - C270

$\eta = 94\%$

Luminaire: Ledil Oy CA12474_SIRI-A_SEOUL_Z8Y22+_SIMULATED
Lamps: 1 x SEOUL Z8Y22+



cd/klm

— C0 - C180 — C90 - C270

$\eta = 97\%$

NOTE: The typical divergence will be changed by different color, chip size and chip position tolerance. The typical total divergence is the full angle measured where the luminous intensity is half of the peak value.