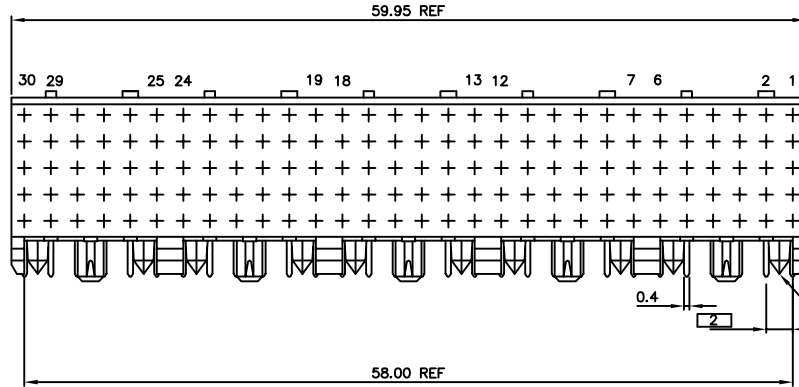


Tous droits strictement reserves. Reproduction ou communication a des tiers interdite sous quelque forme que ce soit sans autorisation écrite du propriétaire. Propriete de c FCI. Droits de reproduction FCI.

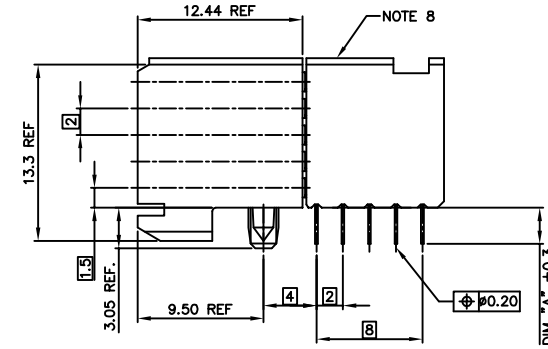


All rights strictly reserved. Reproduction or issue to third parties in any form whatever is not permitted without written authority from the proprietor. Property of FCI. Copyright FCI.

| PRODUCT NUMBER  | ASSY. STYLE | BOARD ATTACHMENT | TAIL TERMINATION | TAIL LGTH. DIM "A" | PCB THICKNESS | NOTES  |
|-----------------|-------------|------------------|------------------|--------------------|---------------|--------|
| SEE TABLE SH. 3 | 1           | PRESS-PEG        | SOLDER-TO-BOARD  | 2.90mm             | 1.6mm         | NOTE 7 |
|                 | 1           | PRESS-PEG        | SOLDER-TO-BOARD  | 3.53mm             | 2.4mm         | NOTE 7 |
|                 | 2           | HEAT-STAKE       | SOLDER-TO-BOARD  | 2.90mm             | 1.6mm         |        |
|                 | 2           | HEAT-STAKE       | SOLDER-TO-BOARD  | 3.53mm             | 2.4mm         |        |
|                 | 3           | PRESS-PEG        | PRESS-FIT        | 2.90mm             | 1.6mm         | NOTE 7 |
|                 | 3           | PRESS-PEG        | PRESS-FIT        | 3.53mm             | 2.4mm         | NOTE 7 |



NOTE 7



ASSY. STYLE 1

NOTES:

- ①. CONNECTOR MATERIALS:  
HOUSING: LCP, 30% GLASS FILLED, UL 94-V0 COMPLIANT  
TERMINAL: PHOSPHOR BRONZE ALLOY
2. PLATING ON TAIL:  
PRESS-FIT TYPE  
73952-YYY IS 0.5-1.5um SnPb  
73952-YYLF IS 0.5-1.5um Sn (LEAD FREE)  
SOLDER-TO-BOARD TYPE  
73952-YYY IS 2-8um SnPb  
73952-YYLF IS 2-8um Sn (LEAD FREE)
3. PRODUCT SPECIFICATION:  
GS-12-002
4. APPLICATION SPECIFICATIONS:  
BUS-20-061  
GS-20-001  
TA-941
- ⑤. PRODUCT MARKING: (PART NUMBER & LOT CODE).
- ⑥. INDICATED HOLES ARE UNPLATED.
- ⑦. LOCATION PEG FEATURES MAY NOT BE AVAILABLE AS SHOWN FOR ASSYS W/ PRESS PEGS.
- ⑧. TOP SURFACE OF PRESS BLOCK MAY EXTEND UP TO 0.4MM HIGHER THAN HOUSING. THIS MAY AFFECT THE TAIL LENGTH BEFORE APPLICATION TO A BOARD.

- ⑨. DIMENSION APPLIES TO BOTH PRESS-FIT AND SOLDER TAIL TERMINATIONS.
10. THESE PRODUCTS WHERE THE PART NUMBER ENDS IN "LF" MEET THE EUROPEAN UNION DIRECTIVES AND OTHER COUNTRY REGULATIONS AS DESCRIBED IN GS-22-008.  
  
ALL PRODUCTS MANUFACTURED BEFORE APRIL 2006 WILL WITHSTAND EXPOSURE TO 240°C FOR 60 SECONDS IN A CONVECTION, INFAR-RED OR VAPOR PHASE REFLOW OVEN.  
  
ALL PRODUCTS MANUFACTURED AFTER MARCH 2006 WILL WITHSTAND EXPOSURE TO 260°C FOR 60 SECONDS IN A CONVECTION, INFAR-RED OR VAPOR PHASE REFLOW OVEN.
- ⑪. FOR LEAD FREE PART NUMBERS ADD "LF" SUFFIX. EXAMPLE: 73952-YYYYLF.

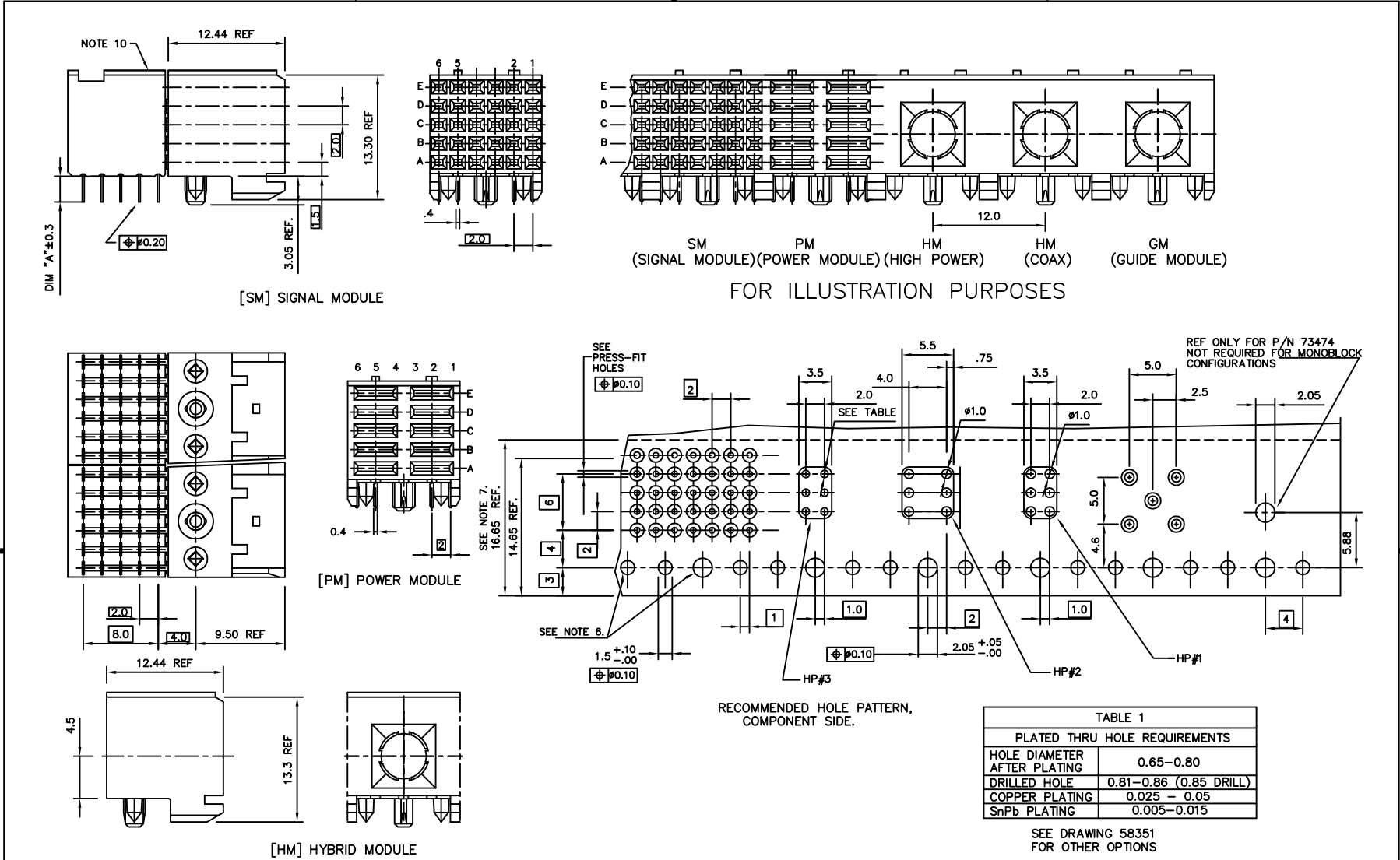
| mat'l. code |                | tolerances unless otherwise specified |          | CUSTOMER COPY |                     | FCI                |                                     |
|-------------|----------------|---------------------------------------|----------|---------------|---------------------|--------------------|-------------------------------------|
| SEE NOTES   |                |                                       |          |               |                     | www.fciconnect.com |                                     |
| ltr         | ecn no         | dr                                    | date     | linear        | .X ±.3              | projection         | title                               |
| H           | V00851         | JWS                                   | 6/2/00   |               | .XX ±.10            |                    | 5 ROW R/A HYBRID RECEPTACLE - 60MM  |
| J           | V01991         | JWS                                   | 8/15/00  |               | .XXX ±.050          |                    |                                     |
| K           | V03-0722       | LP                                    | 8/21/03  | angles        | 0° ±2'              |                    | product family METRAL (tm) code 213 |
| L           | V05-1012       | JRV                                   | 11/3/05  | dr            | M.FETROW 6/25/97    |                    |                                     |
| M           | DC08-0171      | TER                                   | 9/06/08  | enrg          | C.PENDLETON 6/25/97 | MM                 | size dwg no                         |
| N           | DC09-0068      | Cenh                                  | 06/06/09 | chr           | C.PENDLETON 6/25/97 | scale              | 73952                               |
|             |                |                                       |          | appd          | C.PENDLETON 6/25/97 | 1:1                | sheet 1 of 3                        |
| sheet index | revision sheet | N                                     | N        | N             |                     |                    |                                     |
|             |                | 1                                     | 2        | 3             |                     |                    |                                     |

cage code 22526

Tous droits strictement réservés. Reproduction ou communication a des tiers interdite sous quelque forme que ce soit sans autorisation écrite du propriétaire. Propriété de c FCI. Droits de reproduction FCI.



All rights strictly reserved. Reproduction or issue to third parties in any form whatever is not permitted without written authority from the proprietor. Property of FCI. Copyright FCI.



| PLATING CONTACT AREA: |                   |
|-----------------------|-------------------|
| DASH NR:              | PERFORMANCE LEVEL |
| -1YY/1YYLF            | TELCORDIA CO      |
| -2YY/2YYLF            | CUSTOMER SPECIAL  |
| -3YY/3YYLF            | CUSTOMER SPECIAL  |

|                          |          |    |      |  |                     |                  |                                       |                           |        |
|--------------------------|----------|----|------|--|---------------------|------------------|---------------------------------------|---------------------------|--------|
| mat'l. code<br>SEE NOTES |          |    |      | tolerances unless<br>otherwise specified |                     | CUSTOMER<br>COPY |                                       | FCI<br>www.fciconnect.com |        |
| ltr                      | ecn no   | dr | date | linear                                   | .X ±.3              | projection       | title                                 |                           |        |
| N                        |          |    |      |  | .XX ±.10            | MM               | 5 ROW R/A HYBRID<br>RECEPTACLE - 60MM |                           |        |
|                          |          |    |      | angles                                   | .XXX ±.050          |                  |                                       |                           |        |
|                          |          |    |      | dr                                       | M.FETROW 6/25/97    | scale            | product family METRAL (tm)            |                           | code   |
|                          |          |    |      | enr                                      | C.PENDLETON 6/25/97 | 1:1              | size dwg no                           |                           | 213    |
|                          |          |    |      | chr                                      | C.PENDLETON 6/25/97 |                  | A 73952                               |                           | sheet  |
|                          |          |    |      | appd                                     | C.PENDLETON 6/25/97 |                  |                                       |                           | 2 of - |
| sheet                    | revision |    |      |  |                     |                  |                                       |                           |        |
| index                    | sheet    |    |      |  |                     |                  |                                       |                           |        |

cage code  
22526

Tous droits strictement reserves. Reproduction ou communication a des tiers interdite sous quelque forme que ce soit sans autorisation écrite du propriétaire. Propriete de c FCI. Droits de reproduction FCI.



All rights strictly reserved. Reproduction or issue to third parties in any form whatever is not permitted without written authority from the proprietor. Property of FCI. Copyright FCI.

| PRODUCT NO                                      | ASS'Y TYPE | TAIL LENGTH | ROW | 1   2 |    |    |    |    | 3  |    |    |    |    | 4  |    |    |    |    |    |    |    |    |    |    |   |   |   |   |   |   |   |   |   |   |   |   |   |   |   |   |   |   |   |   |   |   |   |   |   |   |   |   |   |   |   |   |   |   |   |
|---|------------|-------------|-----|-------|----|----|----|----|----|----|----|----|----|----|----|----|----|----|----|----|----|----|----|----|---|---|---|---|---|---|---|---|---|---|---|---|---|---|---|---|---|---|---|---|---|---|---|---|---|---|---|---|---|---|---|---|---|---|---|
|   |            |             |     | 30    | 29 | 28 | 27 | 26 | 25 | 24 | 23 | 22 | 21 | 20 | 19 | 18 | 17 | 16 | 15 | 14 | 13 | 12 | 11 | 10 | 9 | 8 | 7 | 6 | 5 | 4 | 3 | 2 | 1 |   |   |   |   |   |   |   |   |   |   |   |   |   |   |   |   |   |   |   |   |   |   |   |   |   |   |
| 73952-X001<br>SEE NOTE 11 FOR LEAD FREE OPTIONS | 1          | 3.53        | E   |       |    |    |    |    |    |    |    |    |    |    |    |    |    |    |    |    |    |    |    |    |   |   |   |   |   | X | X | X | X | X | X | X | X | X | X | X | X | X | X | X | X | X | X | X | X | X | X | X | X | X | X | X | X | X | X |
|   |            |             | D   |       |    |    |    |    |    |    |    |    |    |    |    |    |    |    |    |    |    |    |    |    |   |   |   |   |   | X | X | X | X | X | X | X | X | X | X | X | X | X | X | X | X | X | X | X | X | X | X | X | X | X | X | X | X | X | X |
|   |            |             | C   |       |    |    |    |    |    |    |    |    |    |    |    |    |    |    |    |    |    |    |    |    |   |   |   |   |   | X | X | X | X | X | X | X | X | X | X | X | X | X | X | X | X | X | X | X | X | X | X | X | X | X | X | X | X | X | X |
|   |            |             | B   |       |    |    |    |    |    |    |    |    |    |    |    |    |    |    |    |    |    |    |    |    |   |   |   |   |   | X | X | X | X | X | X | X | X | X | X | X | X | X | X | X | X | X | X | X | X | X | X | X | X | X | X | X | X | X | X |
|   |            |             | A   |       |    |    |    |    |    |    |    |    |    |    |    |    |    |    |    |    |    |    |    |    |   |   |   |   |   | X | X | X | X | X | X | X | X | X | X | X | X | X | X | X | X | X | X | X | X | X | X | X | X | X | X | X | X | X | X |
| MODULE TYPE                                     |            |             | HM  | SM    |    |    |    |    | SM |    |    |    |    | SM |    |    |    |    |    |    |    |    |    |    |   |   |   |   |   |   |   |   |   |   |   |   |   |   |   |   |   |   |   |   |   |   |   |   |   |   |   |   |   |   |   |   |   |   |   |
| 73952-X002<br>SEE NOTE 11 FOR LEAD FREE OPTIONS | 1          | 3.53        | E   |       |    |    |    |    |    |    |    |    |    |    |    |    |    |    |    |    |    |    |    |    |   |   |   |   |   | X | X | X | X | X | X | X | X | X | X | X | X | X | X | X | X | X | X | X | X | X | X | X | X | X | X | X | X | X | X |
|   |            |             | D   |       |    |    |    |    |    |    |    |    |    |    |    |    |    |    |    |    |    |    |    |    |   |   |   |   |   | X | X | X | X | X | X | X | X | X | X | X | X | X | X | X | X | X | X | X | X | X | X | X | X | X | X | X | X | X | X |
|   |            |             | C   |       |    |    |    |    |    |    |    |    |    |    |    |    |    |    |    |    |    |    |    |    |   |   |   |   |   | X | X | X | X | X | X | X | X | X | X | X | X | X | X | X | X | X | X | X | X | X | X | X | X | X | X | X | X | X | X |
|   |            |             | B   |       |    |    |    |    |    |    |    |    |    |    |    |    |    |    |    |    |    |    |    |    |   |   |   |   |   | X | X | X | X | X | X | X | X | X | X | X | X | X | X | X | X | X | X | X | X | X | X | X | X | X | X | X | X | X | X |
|   |            |             | A   |       |    |    |    |    |    |    |    |    |    |    |    |    |    |    |    |    |    |    |    |    |   |   |   |   |   | X | X | X | X | X | X | X | X | X | X | X | X | X | X | X | X | X | X | X | X | X | X | X | X | X | X | X | X | X | X |
| MODULE TYPE                                     |            |             | GM  | SM    |    |    |    |    | SM |    |    |    |    | SM |    |    |    |    |    |    |    |    |    |    |   |   |   |   |   |   |   |   |   |   |   |   |   |   |   |   |   |   |   |   |   |   |   |   |   |   |   |   |   |   |   |   |   |   |   |
| 73952-X003<br>SEE NOTE 11 FOR LEAD FREE OPTIONS | 3          | 3.53        | E   |       |    |    |    |    |    |    |    |    |    |    |    |    |    |    |    |    |    |    |    |    |   |   |   |   |   | X | X | X | X | X | X | X | X | X | X | X | X | X | X | X | X | X | X | X | X | X | X | X | X | X | X | X | X | X | X |
|   |            |             | D   |       |    |    |    |    |    |    |    |    |    |    |    |    |    |    |    |    |    |    |    |    |   |   |   |   |   | X | X | X | X | X | X | X | X | X | X | X | X | X | X | X | X | X | X | X | X | X | X | X | X | X | X | X | X | X | X |
|   |            |             | C   |       |    |    |    |    |    |    |    |    |    |    |    |    |    |    |    |    |    |    |    |    |   |   |   |   |   | X | X | X | X | X | X | X | X | X | X | X | X | X | X | X | X | X | X | X | X | X | X | X | X | X | X | X | X | X | X |
|   |            |             | B   |       |    |    |    |    |    |    |    |    |    |    |    |    |    |    |    |    |    |    |    |    |   |   |   |   |   | X | X | X | X | X | X | X | X | X | X | X | X | X | X | X | X | X | X | X | X | X | X | X | X | X | X | X | X | X | X |
|   |            |             | A   |       |    |    |    |    |    |    |    |    |    |    |    |    |    |    |    |    |    |    |    |    |   |   |   |   |   | X | X | X | X | X | X | X | X | X | X | X | X | X | X | X | X | X | X | X | X | X | X | X | X | X | X | X | X | X | X |
| MODULE TYPE                                     |            |             | HM  | SM    |    |    |    |    | SM |    |    |    |    | SM |    |    |    |    |    |    |    |    |    |    |   |   |   |   |   |   |   |   |   |   |   |   |   |   |   |   |   |   |   |   |   |   |   |   |   |   |   |   |   |   |   |   |   |   |   |
| 73952-X004<br>SEE NOTE 11 FOR LEAD FREE OPTIONS | 1          | 3.53        | E   | X     | X  | X  | X  | X  | X  | X  | X  | X  | X  | X  | X  | X  | X  | X  | X  | X  | X  | X  | X  | X  | X | X | X |   |   |   |   |   |   |   |   |   |   |   |   |   |   |   |   |   |   |   |   |   |   |   |   |   |   |   |   |   |   |   |   |
|   |            |             | D   | X     | X  | X  | X  | X  | X  | X  | X  | X  | X  | X  | X  | X  | X  | X  | X  | X  | X  | X  | X  | X  | X | X | X |   |   |   |   |   |   |   |   |   |   |   |   |   |   |   |   |   |   |   |   |   |   |   |   |   |   |   |   |   |   |   |   |
|   |            |             | C   | -     | X  | X  | X  | X  | X  | X  | X  | X  | X  | X  | X  | X  | X  | X  | X  | X  | X  | X  | X  | X  | X | X | X |   |   |   |   |   |   |   |   |   |   |   |   |   |   |   |   |   |   |   |   |   |   |   |   |   |   |   |   |   |   |   |   |
|   |            |             | B   | -     | X  | X  | X  | X  | X  | X  | X  | X  | X  | X  | X  | X  | X  | X  | X  | X  | X  | X  | X  | X  | X | X | X |   |   |   |   |   |   |   |   |   |   |   |   |   |   |   |   |   |   |   |   |   |   |   |   |   |   |   |   |   |   |   |   |
|   |            |             | A   | X     | -  | X  | X  | X  | X  | X  | X  | X  | X  | X  | X  | X  | X  | X  | X  | X  | X  | X  | X  | X  | X | X | X |   |   |   |   |   |   |   |   |   |   |   |   |   |   |   |   |   |   |   |   |   |   |   |   |   |   |   |   |   |   |   |   |
| MODULE TYPE                                     |            |             | SM  | SM    |    |    |    |    | SM |    |    |    |    | SM |    |    |    |    | GM |    |    |    |    |    |   |   |   |   |   |   |   |   |   |   |   |   |   |   |   |   |   |   |   |   |   |   |   |   |   |   |   |   |   |   |   |   |   |   |   |
| 73952-X005<br>SEE NOTE 11 FOR LEAD FREE OPTIONS | 1          | 3.53        | E   |       |    |    |    |    |    |    |    |    |    |    |    |    |    |    |    |    |    |    |    |    |   |   |   |   |   | X | X | X | X | X | X | X | X | X | X | X | X | X | X | X | X | X | X | X | X | X | X | X | X |   |   |   |   |   |   |
|   |            |             | D   |       |    |    |    |    |    |    |    |    |    |    |    |    |    |    |    |    |    |    |    |    |   |   |   |   |   | X | X | X | X | X | X | X | X | X | X | X | X | X | X | X | X | X | X | X | X | X | X | X | X |   |   |   |   |   |   |
|   |            |             | C   |       |    |    |    |    |    |    |    |    |    |    |    |    |    |    |    |    |    |    |    |    |   |   |   |   |   | X | X | X | X | X | X | X | X | X | X | X | X | X | X | X | X | X | X | X | X | X | X | X | X |   |   |   |   |   |   |
|   |            |             | B   |       |    |    |    |    |    |    |    |    |    |    |    |    |    |    |    |    |    |    |    |    |   |   |   |   |   | X | X | X | X | X | X | X | X | X | X | X | X | X | X | X | X | X | X | X | X | X | X | X | X |   |   |   |   |   |   |
|   |            |             | A   |       |    |    |    |    |    |    |    |    |    |    |    |    |    |    |    |    |    |    |    |    |   |   |   |   |   | X | X | X | X | X | X | X | X | X | X | X | X | X | X | X | X | X | X | X | X | X | X | X | X |   |   |   |   |   |   |
| MODULE TYPE                                     |            |             | GM  | SM    |    |    |    |    | SM |    |    |    |    | SM |    |    |    |    | GM |    |    |    |    |    |   |   |   |   |   |   |   |   |   |   |   |   |   |   |   |   |   |   |   |   |   |   |   |   |   |   |   |   |   |   |   |   |   |   |   |

| LOAD PATTERN |                   |
|--------------|-------------------|
| X            | LOADED            |
| -            | NOT LOADED        |
| HP#1         | PWR. CONN. LOADED |
| HP#3         | PWR. CONN. LOADED |

|                          |                |    |      |                                       |             |         |       |               |                                    |                    |       |
|--------------------------|----------------|----|------|---------------------------------------|-------------|---------|-------|---------------|------------------------------------|--------------------|-------|
| mat'l. code<br>SEE NOTES |                |    |      | tolerances unless otherwise specified |             |         |       | CUSTOMER COPY |                                    | www.fciconnect.com |       |
| ltr                      | ecn no         | dr | date | linear                                | .X ±.3      |         |       | projection    | title                              |                    |       |
| N                        |                |    |      |                                       | .XX ±.10    |         |       |               | 5 ROW R/A HYBRID RECEPTACLE - 60MM |                    |       |
|                          |                |    |      | angles                                | .XXX ±.050  |         |       |               | product family METRAL (tm)         |                    |       |
|                          |                |    |      |                                       | 0° ±2'      |         |       |               | code                               |                    |       |
|                          |                |    |      | dr                                    | M.FETROW    | 6/25/97 | scale | 1:1           | size                               |                    | 213   |
|                          |                |    |      | enr                                   | C.PENDLETON | 6/25/97 |       |               | dwg no                             |                    | 73952 |
|                          |                |    |      | chr                                   | C.PENDLETON | 6/25/97 |       |               | 3 of -                             |                    |       |
|                          |                |    |      | appd                                  | C.PENDLETON | 6/25/97 |       |               |                                    |                    |       |
| sheet index              | revision sheet |    |      |                                       |             |         |       |               |                                    |                    |       |