

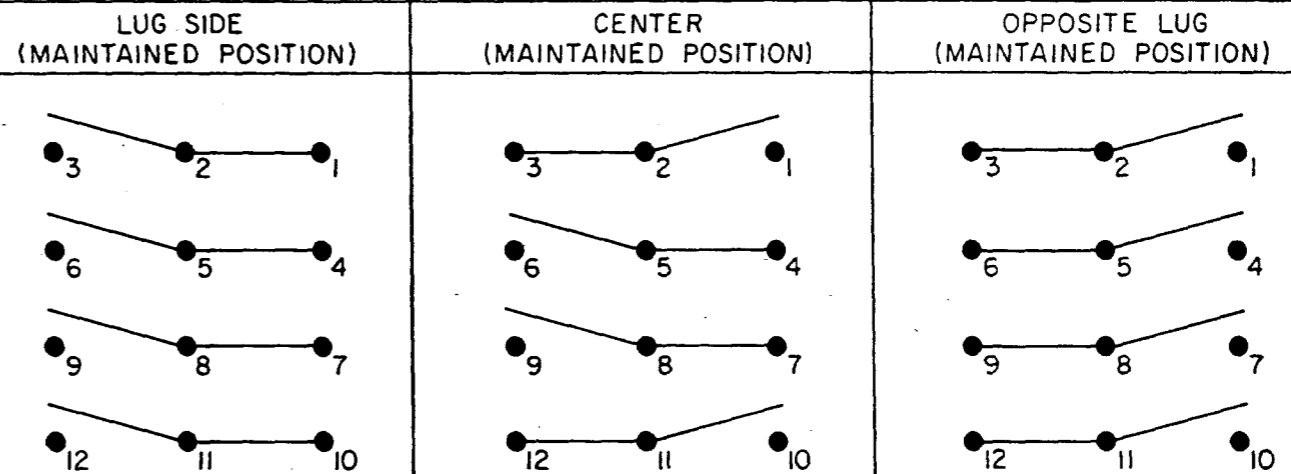
MICRO SWITCH
 FREEPORT ILLINOIS U.S.A.
 A DIVISION OF HONEYWELL
 FED. MFG. CODE 91929

**SWITCH - TOGGLE
 FLUSH KEY**

CATALOG LISTING
4TP201-12

THIS DRAWING COVERS A PROPRIETARY ITEM AND IS THE PROPERTY OF MICRO SWITCH, A DIVISION OF HONEYWELL. THIS DRAWING IS NOT TO BE COPIED OR USED WITHOUT THE APPROVAL OF MICRO SWITCH.

CIRCUIT DIAGRAM

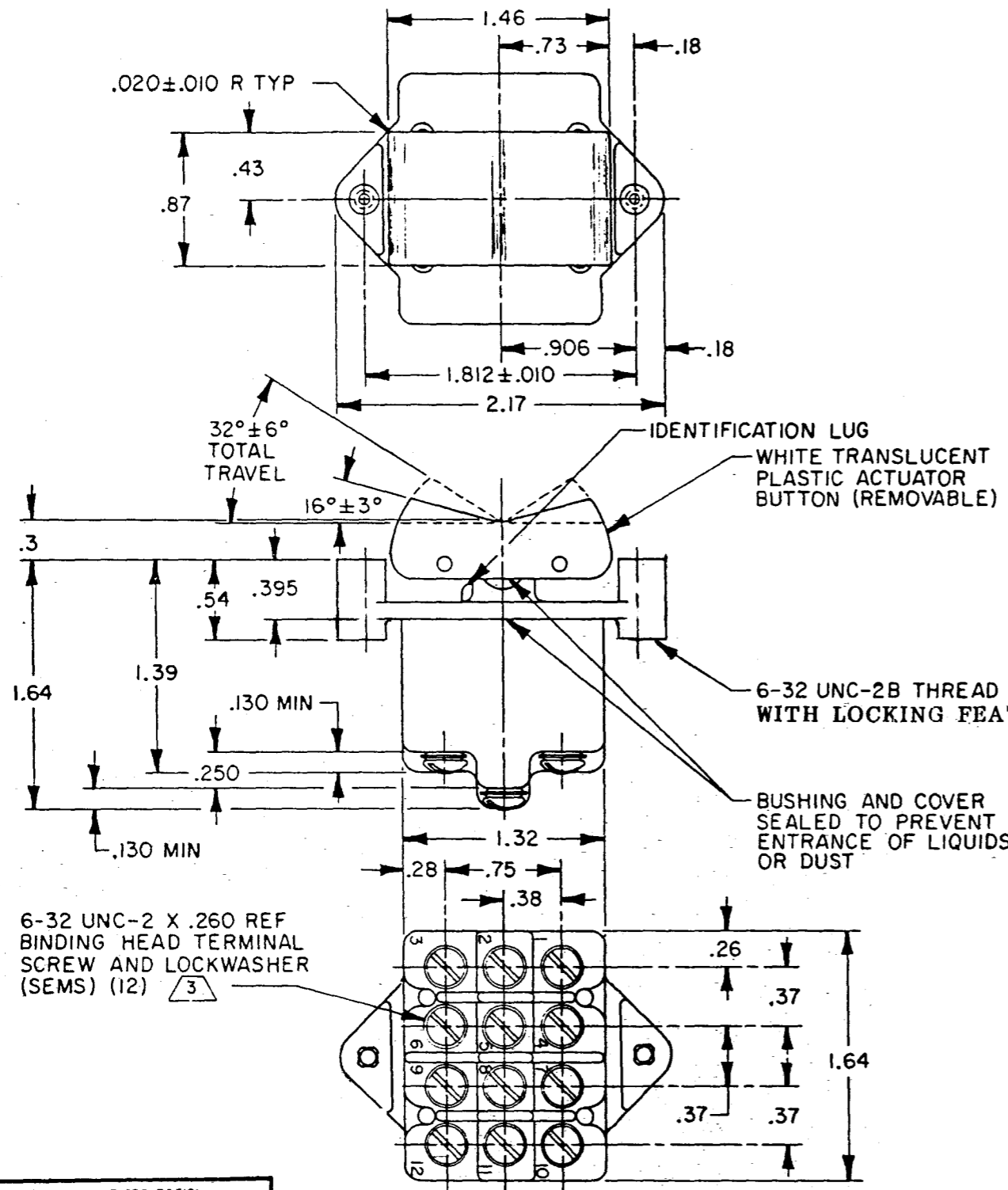


ELECTRICAL DATA

L191 15A 125, 250, 277 VAC
 1/2HP 125 VAC
 1HP 250, 277 VAC
 5A 125 VAC "L"



DRAWING NUMBER: 4TP201-12
 PAGE 1 OF 1
 ISSUE: 6
 REVISIONS:
 A: 056164, J A P, 6 MAR 85
 B: 060084, S. J. S., 22 AUG 86
 C: 077897, 15 JUN 94
 D: 79047, S A D, 12 JAN 95
 E: 94416, CO, 29 NOV 89
 CHECKED: C E B, 3 FEB 82
 DRAWN: J A P, 27 OCT 81
 FORMTEK: FD-32894-C



- NOTES**
- 1 - MICRO SWITCH CATALOG LISTING MARKED ON SIDE OF SWITCH
 - 2 - THESE SWITCHES WILL WITHSTAND TEMPERATURE OF 160°F
 - 3 - SCREWS FURNISHED UNASSEMBLED

THIRD ANGLE PROJECTION

SCALE: FULL

DO NOT SCALE PRINT

TOLERANCES

	DM.	TOL.	DM.	TOL.
	mm	mm/in	in	mm/in
NO PLACES	X	1/64	X	0.01/02
ONE PLACE	X, X	0.4/016	X, X	0.06/015
TWO PLACES	X, X	0.15/008	X, X	0.02/015
THREE PLACES	X, X, X		X, X, X	0.13/005

DESIGN UNITS: SI METRIC US CUSTOMARY

WEIGHT: .22 LB EST.